

Product datasheet for **TP318532M**

PSORS1C1 (NM_014068) Human Recombinant Protein

Product data:

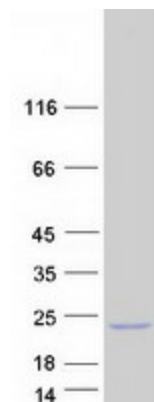
Product Type:	Recombinant Proteins
Description:	Recombinant protein of human psoriasis susceptibility 1 candidate 1 (PSORS1C1), 100 µg
Species:	Human
Expression Host:	HEK293T
Expression cDNA Clone or AA Sequence:	>RC218532 representing NM_014068 Red =Cloning site Green =Tags(s)
	MTCTDQKSHSQRALGTQTPALQGPQLLNTDPSSSEETRPPHVNPDLRCHMEPANHFHWHAGDLQAMISK EFH LAATQDDCRKGRTQEDILVPSSHPFLFASVLPMAPEEAARLQQPQLPPPSGIHLSASRTLAPTLTYSSP PSHSPFGLSLI
	TRTRPLEQKLISEEDLAANDILDYKDDDDKV
Tag:	C-Myc/DDK
Predicted MW:	16.4 kDa
Concentration:	>0.05 µg/µL as determined by microplate BCA method
Purity:	> 80% as determined by SDS-PAGE and Coomassie blue staining
Buffer:	25 mM Tris-HCl, 100 mM glycine, pH 7.3, 10% glycerol
Preparation:	Recombinant protein was captured through anti-DDK affinity column followed by conventional chromatography steps.
Note:	For testing in cell culture applications, please filter before use. Note that you may experience some loss of protein during the filtration process.
Storage:	Store at -80°C.
Stability:	Stable for 12 months from the date of receipt of the product under proper storage and handling conditions. Avoid repeated freeze-thaw cycles.
RefSeq:	<u>NP_054787</u>
Locus ID:	170679
UniProt ID:	<u>Q9UIG5</u>



[View online »](#)

RefSeq Size:	861
Cytogenetics:	6p21.33
RefSeq ORF:	456
Synonyms:	C6orf16; SEEK1
Summary:	This gene is one of several genes thought to confer susceptibility to psoriasis and systemic sclerosis, located on chromosome 6 near the major histocompatibility complex (MHC) class I region. [provided by RefSeq, Sep 2011]

Product images:



Coomassie blue staining of purified PSORS1C1 protein (Cat# [TP318532]). The protein was produced from HEK293T cells transfected with PSORS1C1 cDNA clone (Cat# [RC218532]) using MegaTran 2.0 (Cat# [TT210002]).