

## Product datasheet for **TP318532**

### PSORS1C1 (NM\_014068) Human Recombinant Protein

#### Product data:

Product Type:	Recombinant Proteins
Description:	Recombinant protein of human psoriasis susceptibility 1 candidate 1 (PSORS1C1), 20 µg
Species:	Human
Expression Host:	HEK293T
Expression cDNA Clone or AA Sequence:	>RC218532 representing NM_014068 <b>Red</b> =Cloning site <b>Green</b> =Tags(s)  MTCTDQKSHSQRALGTQTPALQGPQLLNTDPSSEETRPPHVNPDR LCHMEPANHFWHAGDLQAMISKEFH LAATQDDCRKGRTQEDILVPSSHPELFASVLPMAPEEAARLQQPQLPPPSGIHLSASRTLAP TLLYSSP PSHSPFGLSSLI  <b>TRTRPLEQKLISEEDLAANDILDYKDDDDKV</b>
Tag:	C-Myc/DDK
Predicted MW:	16.4 kDa
Concentration:	>0.05 µg/µL as determined by microplate BCA method
Purity:	> 80% as determined by SDS-PAGE and Coomassie blue staining
Buffer:	25 mM Tris-HCl, 100 mM glycine, pH 7.3, 10% glycerol
Preparation:	Recombinant protein was captured through anti-DDK affinity column followed by conventional chromatography steps.
Note:	For testing in cell culture applications, please filter before use. Note that you may experience some loss of protein during the filtration process.
Storage:	Store at -80°C.
Stability:	Stable for 12 months from the date of receipt of the product under proper storage and handling conditions. Avoid repeated freeze-thaw cycles.
RefSeq:	<a href="#">NP_054787</a>
Locus ID:	170679
UniProt ID:	<a href="#">Q9UIG5</a> , <a href="#">D2IYL0</a>
RefSeq Size:	861



[View online »](#)

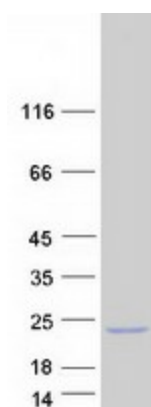
Cytogenetics: 6p21.33

RefSeq ORF: 456

Synonyms: C6orf16; SEEK1

Summary: This gene is one of several genes thought to confer susceptibility to psoriasis and systemic sclerosis, located on chromosome 6 near the major histocompatibility complex (MHC) class I region. [provided by RefSeq, Sep 2011]

### Product images:



Coomassie blue staining of purified PSORS1C1 protein (Cat# TP318532). The protein was produced from HEK293T cells transfected with PSORS1C1 cDNA clone (Cat# [RC218532]) using MegaTran 2.0 (Cat# [TT210002]).