

Product datasheet for **TP318530M**

T (NM_003181) Human Recombinant Protein

Product data:

Product Type:	Recombinant Proteins
Description:	Recombinant protein of human T, brachyury homolog (mouse) (T), 100 µg
Species:	Human
Expression Host:	HEK293T
Expression cDNA Clone or AA Sequence:	>RC218530 representing NM_003181 Red =Cloning site Green =Tags(s)
	<p>MSSPGTESAGKSLQYRVDHLLSAVENELQAGSEKGDPTERELRVGLEESELWLRFKELTNEMIVTKNGRR MFPVLKVNVSGLDPNAMYSFLLDFVAADNHRWKYVNGEWVPGGKPEPQAPSCVYIHPDSPNFGAHWMKAP VSFSKVKLTKNLNGGGQIMLNSLHKYEPRIHIVRVGGPQRMITSHCFPETQFIAVTAYQNEEITALKIKY NPFKAFLDAKERSDHKEMMEEPGDSQQPGYSQSGWLLPGTSTLCPANPHPQFGGALSPLSTHSCDRY PTLRSHRSPYPSPYAHRNNSPTYSDNSPACLSMLQSHDNWSSLGMPAHPMSMLPVSHNASPPTSSSQYPS LWSVSNGAVTPGSQAAAVSNGLGAQFFRGSPAHYTPLTHPVSAOSSSGSPLYEGAAAATDIVDSQYDAAA QGRLIASWTPVSPPSM</p> <p>TRTRPLEQKLISEEDLAANDILDYKDDDDKV</p>
Tag:	C-Myc/DDK
Predicted MW:	47.3 kDa
Concentration:	>0.05 µg/µL as determined by microplate BCA method
Purity:	> 80% as determined by SDS-PAGE and Coomassie blue staining
Buffer:	25 mM Tris-HCl, 100 mM glycine, pH 7.3, 10% glycerol
Preparation:	Recombinant protein was captured through anti-DDK affinity column followed by conventional chromatography steps.
Note:	For testing in cell culture applications, please filter before use. Note that you may experience some loss of protein during the filtration process.
Storage:	Store at -80°C.
Stability:	Stable for 12 months from the date of receipt of the product under proper storage and handling conditions. Avoid repeated freeze-thaw cycles.
RefSeq:	<u>NP_003172</u>



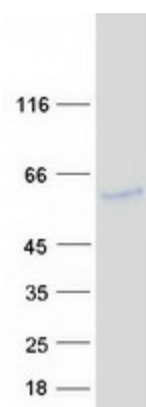
[View online »](#)

Locus ID: 6862
UniProt ID: [Q15178](#)
RefSeq Size: 2518
Cytogenetics: 6q27
RefSeq ORF: 1308
Synonyms: SAVA; T; TFT

Summary: The protein encoded by this gene is an embryonic nuclear transcription factor that binds to a specific DNA element, the palindromic T-site. It binds through a region in its N-terminus, called the T-box, and effects transcription of genes required for mesoderm formation and differentiation. The protein is localized to notochord-derived cells. Variation in this gene was associated with susceptibility to neural tube defects and chordoma. A mutation in this gene was found in a family with sacral agenesis with vertebral anomalies. [provided by RefSeq, Sep 2018]

Protein Families: ES Cell Differentiation/IPS, Transcription Factors

Product images:



Coomassie blue staining of purified TBXT protein (Cat# [TP318530]). The protein was produced from HEK293T cells transfected with TBXT cDNA clone (Cat# [RC218530]) using MegaTran 2.0 (Cat# [TT210002]).