

Product datasheet for **TP318529**

NDUF3 (NDUFAF3) (NM_199417) Human Recombinant Protein

Product data:

Product Type:	Recombinant Proteins
Description:	Recombinant protein of human chromosome 3 open reading frame 60 (C3orf60), transcript variant 5, 20 µg
Species:	Human
Expression Host:	HEK293T
Expression cDNA Clone or AA Sequence:	>RC218529 representing NM_199417 Red =Cloning site Green =Tags(s)
	 MATALALRSLYRARPSLRCPVPELPWAPRRGHRLSPADDELYQRTRISLLQREAAQAMYIDSYNSRGFMI NGNRVLGPCALLPHSVQWNVVGSHQDITEDSFSLFWLLEPRIEIVVGTGDRTERLQSQVLQAMRQRGIA VEVQDTPNACATFNFLCHEGRVTGAALIPPPGGTSLTSLGQAAQ TRTRPLEQKLISEEDLAANDILDYKDDDDKV
Tag:	C-Myc/DDK
Predicted MW:	13.7 kDa
Concentration:	>0.05 µg/µL as determined by microplate BCA method
Purity:	> 80% as determined by SDS-PAGE and Coomassie blue staining
Buffer:	25 mM Tris-HCl, 100 mM glycine, pH 7.3, 10% glycerol
Preparation:	Recombinant protein was captured through anti-DDK affinity column followed by conventional chromatography steps.
Note:	For testing in cell culture applications, please filter before use. Note that you may experience some loss of protein during the filtration process.
Storage:	Store at -80°C.
Stability:	Stable for 12 months from the date of receipt of the product under proper storage and handling conditions. Avoid repeated freeze-thaw cycles.
RefSeq:	NP_955449
Locus ID:	25915
UniProt ID:	Q9BU61



[View online »](#)

RefSeq Size: 1511

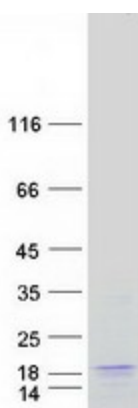
Cytogenetics: 3p21.31

RefSeq ORF: 384

Synonyms: 2P1; C3orf60; DKFZp564J0123; E3-3; MGC10527

Summary: This gene encodes a mitochondrial complex I assembly protein that interacts with complex I subunits. Mutations in this gene cause mitochondrial complex I deficiency, a fatal neonatal disorder of the oxidative phosphorylation system. Alternatively spliced transcript variants encoding different isoforms have been identified. [provided by RefSeq, Jul 2009]

Product images:



Coomassie blue staining of purified NDUFAF3 protein (Cat# TP318529). The protein was produced from HEK293T cells transfected with NDUFAF3 cDNA clone (Cat# [RC218529]) using MegaTran 2.0 (Cat# [TT210002]).