

## Product datasheet for TP318506M

### DCC (NM\_005215) Human Recombinant Protein

#### Product data:

**Product Type:** Recombinant Proteins  
**Description:** Recombinant protein of human deleted in colorectal carcinoma (DCC), 100 µg  
**Species:** Human  
**Expression Host:** HEK293T  
**Expression cDNA Clone or AA Sequence:** >RC218506 representing NM\_005215  
Red=Cloning site Green=Tags(s)

MENSLRCVWVPKLAFLVFGASLLSAHLQVTGFQIKAFTALRFLSEPSDAVTMRGGNVLLDCAESDRGVP  
 VIKWKKDGIHLALGMDERKQQLSNGSLLIQNILHSRHHKPDEGLYQCEASLGDSGSISRTAKVAVAGPL  
 RFLSQTESVTAFMGDVTLLKCEVIGEMPMTIHWQKNQDLTPIPGDSRVVLPSPGALQISRLQPGDIGIY  
 RCSARNPASSRTGNEAEVRILSDPGLHRQLYFLQRPSNVVAIEGKDAVLECCVSGYPPPSFTWLRGEEVI  
 QLRSKKYSLLGGSNLLISNVTDDDSGMYTCVWYTKNENISASAELTVLVPWFNLNHPNSLYAYESMDIEF  
 ECTVSGKPVPTVNWKMGDWDVIPSDFYQIVGGSNLRILGVVKSDEGFYQVAENEAGNAQTSACLIVPKP  
 AIPSSSVLPSAPRDVVPVLVSSRFVRLSWRPPAEAKGNIQFTVFFSREGDNRERALNTTQPGSLQLTVG  
 NLKPEAMYTRVWAYNEWGPGESSQPIKVATQPELQVPGPVENLQAVSTSPSILITWEPPAYANGPVQG  
 YRLFCTEVSTGKEQNIQIEVDGLSYKLEGLKFKTEYSRFLAYNRYGPGVSTDDITVVTLSDVPSAPPQNV  
 LEVNSRSIKVSWLPPPSGTQNGFITGYKIRHRKTRRGEMETLEPNNLWYLFGLGKGSQYSFQVSAMT  
 VNGTGPPSNWYTAETPENDLDESQVPDQPSSLHVRPQTNCIIMSWTPPLNPNIVVRGYIIGYGVGSPYAE  
 TVRVDISKQRYYSIERLESSHYVISLKAFNNAGEGVPLYESATTRSITDPTDPVDYYPDLLDDFPTSVPDL  
 STPMLPPVGVQAVALTHDAVRVSWADNSVPKNQKTSEVRLYTVRWRTSFSASAKYKSEDTTLSYATATGL  
 KPNTMYEFSVMVTKNRRSSTWSMTAHATTYEAAPTSAPKDLTVITREGKPRAVIVSWQPPEANGKITAY  
 ILFYTLDKNIPIDDWIMETISGDRLTHQIMDLNLDTMYFRIQARNKSGVGLSDPILFRTLKVEHPDKM  
 ANDQGRHGDGGYWPVDTNLIDRSTLNEPPIGQMHPHGSVTPQKNSNLLVIIVTVGVITLVVVIVAVI  
 CTRRSSAQQRKRATHSAGKRKGSQKDLRPPDLWIHHEEMEMKNIKPSGTDPAGRDPSIQSCQDLTPVS  
 HSQSETQLGSKSTSHSGQDTEEAGSSMSTLERSLAARRAPRAKLMIPMDAQSNNPAVVAIPVPTLESAQ  
 YPGILPSPTCGYPHPQFTLRPVPFPTLSVDRGFGAGRSQSVSEGPPTTQPPMLPPSQPEHSSSEEPSRT  
 IPTACVRPTHPLRSFANLLPPPMSAIEPKVPTPLLSQPGPTLPKTHVKTASLGLAGKARSPLLPVSV  
 TAPEVSEESHKPTEDSANVYEQDDLSEQMASLEGLMKQLNAITGSAF

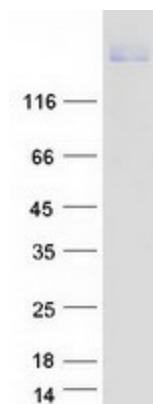
TRTRPLEQKLISEEDLAANDILDYKDDDDKV

**Tag:** C-Myc/DDK  
**Predicted MW:** 158.3 kDa



[View online »](#)

|                          |   |
|--------------------------|---|
| <b>Concentration:</b>    | >0.05 µg/µL as determined by microplate BCA method  |
| <b>Purity:</b>           | > 80% as determined by SDS-PAGE and Coomassie blue staining   |
| <b>Buffer:</b>           | 25 mM Tris-HCl, 100 mM glycine, pH 7.3, 10% glycerol  |
| <b>Preparation:</b>      | Recombinant protein was captured through anti-DDK affinity column followed by conventional chromatography steps.  |
| <b>Note:</b>             | For testing in cell culture applications, please filter before use. Note that you may experience some loss of protein during the filtration process.  |
| <b>Storage:</b>          | Store at -80°C.   |
| <b>Stability:</b>        | Stable for 12 months from the date of receipt of the product under proper storage and handling conditions. Avoid repeated freeze-thaw cycles.   |
| <b>RefSeq:</b>           | <a href="#">NP_005206</a>   |
| <b>Locus ID:</b>         | 1630  |
| <b>UniProt ID:</b>       | <a href="#">P43146</a> , <a href="#">Q49AK4</a>   |
| <b>RefSeq Size:</b>      | 4608  |
| <b>Cytogenetics:</b>     | 18q21.2   |
| <b>RefSeq ORF:</b>       | 4341  |
| <b>Synonyms:</b>         | CRC18; CRCR1; HGPPS2; IGDC1; MRMV1; NTN1R1  |
| <b>Summary:</b>          | This gene encodes a netrin 1 receptor. The transmembrane protein is a member of the immunoglobulin superfamily of cell adhesion molecules, and mediates axon guidance of neuronal growth cones towards sources of netrin 1 ligand. The cytoplasmic tail interacts with the tyrosine kinases Src and focal adhesion kinase (FAK, also known as PTK2) to mediate axon attraction. The protein partially localizes to lipid rafts, and induces apoptosis in the absence of ligand. The protein functions as a tumor suppressor, and is frequently mutated or downregulated in colorectal cancer and esophageal carcinoma. [provided by RefSeq, Oct 2009] |
| <b>Protein Families:</b> | Druggable Genome, Transmembrane   |
| <b>Protein Pathways:</b> | Axon guidance, Colorectal cancer, Pathways in cancer  |

**Product images:**

Coomassie blue staining of purified DCC protein (Cat# [TP318506]). The protein was produced from HEK293T cells transfected with DCC cDNA clone (Cat# [RC218506]) using MegaTran 2.0 (Cat# [TT210002]).