

Product datasheet for TP318506L

DCC (NM_005215) Human Recombinant Protein

Product data:

Product Type: Recombinant Proteins
Description: Recombinant protein of human deleted in colorectal carcinoma (DCC), 1 mg
Species: Human
Expression Host: HEK293T
Expression cDNA Clone or AA Sequence: >RC218506 representing NM_005215
Red=Cloning site Green=Tags(s)

MENSLRCVWVPKLAFLVFGASLLSAHLQVTGFQIKAFALRFLSEPSDAVTMRGGNVLLDSCAESDRGVP
 VIKWKKDGIHLALGMDERKQQLSNGSLLIQNILHSRHHKPDEGLYQCEASLGDSGSISRTAKVAVAGPL
 RFLSQTESVTAFMGDVTLLKCEVIGEMPMTIHWQKNQDLTPIPGDSRVVWLPAGALQISRLQPGDIGY
 RCSARNPASSRTGNEAEVRILSDPGLHRQLYFLQRPSNVVAIEGKDAVLECCVSGYPPPSFTWLRGEEVI
 QLRSKKYSLLGGSNLLISNVTDDDSGMYTCVWYTKNENISASAELTVLVPPWFLNHPSNLYAYESMDIEF
 ECTVSGKPVPTVNWKMGDWDVIPSDFYQIVGGSNLRILGVVKSDEGFYQVAENEAGNAQTSACLIVPKP
 AIPSSSVLPSAPRDVVPVLVSSRFVRLSWRPPAEAKGNIQFTVFFSREGDNRERALNTTQPGSLQLTVG
 NLKPEAMYFRVWAYNEWGPGESSQPIKVATQPELQVPGPVENLQAVSTSPSILITWEPPAYANGPVQG
 YRLFCTEVSTGKEQNIQIEVDGLSYKLEGLKFKTEYSRFLAYNRYGPGVSTDDITVVTLSDVPSAPPQNV
 LEVNSRSIKVSWLPPPSGTQNGFITGYKIRHRKTRRGEMETLEPNNLWYLFGLGKGSQYSFQVSAMT
 VNGTGPPSNWYTAETPENDLDESQVPDQPSSLHVRPQTNCIIMSWTPPLNPNIVVRGYIIGYGVGSPYAE
 TVRVDSKQRYYSIERLESSHYVISLKAFNNAGEGVPLYESATTRSITDPTDPVDYYPDLLDFPSTVDPDL
 STPMLPPVGVQAVALTHDAVRVSWADNSVPKNQKTSEVRLYTVRWRTSFSASAKYKSEDTTSLSYTATGL
 KPNTMYEFSVMVTKNRRSSTWSMTAHATTYEAAPTSAPKDLTVITREGKPRVIVSWQPPLEANGKITAY
 ILFYTLDKNIPIDDWIMETISGDRLTHQIMDLNLDTMYFRIQARNKSGVGLSDPILFRTLKVEHPDKM
 ANDQGRHGDGGYWPVDTNLIDRSTLNEPPIGQMHPHGSVTPQKNSNLLVIIVTVGVITLVVVIVAVI
 CTRRSSAQQRKRATHSAGKRKGSQKDLRPPDLWIHHEEMEMKNIKPSGTDPAGRDSDPIQSCQDLTPVS
 HSQSETQLGSKSTSHSGQDTEEAGSSMSTLERSLAARRAPRAKLMIPMDAQSNPAAVSAIPVPTLESAQ
 YPGILPSPTCGYPHPQFTLRPVFPPTLSVDRGFGAGRSQSVSEGPPTTQPPMLPPSQPEHSSSEEPSRT
 IPTACVRPTHPLRSFANLLPPPMSAIEPKVPTPLLSQPGPTLPKTHVKTASLGLAGKARSPLLPVSV
 TAPEVSEESHKPTEDSANVYEQDDLSEQMASLEGLMKQLNAITGSAF

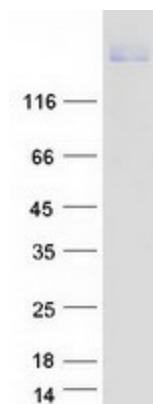
TRTRPLEQKLISEEDLAANDILDYKDDDDKV

Tag: C-Myc/DDK
Predicted MW: 158.3 kDa



[View online »](#)

Concentration:	>0.05 µg/µL as determined by microplate BCA method
Purity:	> 80% as determined by SDS-PAGE and Coomassie blue staining
Buffer:	25 mM Tris-HCl, 100 mM glycine, pH 7.3, 10% glycerol
Preparation:	Recombinant protein was captured through anti-DDK affinity column followed by conventional chromatography steps.
Note:	For testing in cell culture applications, please filter before use. Note that you may experience some loss of protein during the filtration process.
Storage:	Store at -80°C.
Stability:	Stable for 12 months from the date of receipt of the product under proper storage and handling conditions. Avoid repeated freeze-thaw cycles.
RefSeq:	NP_005206
Locus ID:	1630
UniProt ID:	P43146 , Q49AK4
RefSeq Size:	4608
Cytogenetics:	18q21.2
RefSeq ORF:	4341
Synonyms:	CRC18; CRCR1; HGPPS2; IGDC1; MRMV1; NTN1R1
Summary:	This gene encodes a netrin 1 receptor. The transmembrane protein is a member of the immunoglobulin superfamily of cell adhesion molecules, and mediates axon guidance of neuronal growth cones towards sources of netrin 1 ligand. The cytoplasmic tail interacts with the tyrosine kinases Src and focal adhesion kinase (FAK, also known as PTK2) to mediate axon attraction. The protein partially localizes to lipid rafts, and induces apoptosis in the absence of ligand. The protein functions as a tumor suppressor, and is frequently mutated or downregulated in colorectal cancer and esophageal carcinoma. [provided by RefSeq, Oct 2009]
Protein Families:	Druggable Genome, Transmembrane
Protein Pathways:	Axon guidance, Colorectal cancer, Pathways in cancer

Product images:

Coomassie blue staining of purified DCC protein (Cat# [TP318506]). The protein was produced from HEK293T cells transfected with DCC cDNA clone (Cat# [RC218506]) using MegaTran 2.0 (Cat# [TT210002]).