

## Product datasheet for **TP318502M**

### **KLHDC9 (NM\_152366) Human Recombinant Protein**

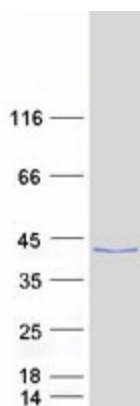
#### **Product data:**

<b>Product Type:</b>	Recombinant Proteins
<b>Description:</b>	Recombinant protein of human kelch domain containing 9 (KLHDC9), transcript variant 1, 100 µg
<b>Species:</b>	Human
<b>Expression Host:</b>	HEK293T
<b>Expression cDNA Clone or AA Sequence:</b>	>RC218502 protein sequence <b>Red</b> =Cloning site <b>Green</b> =Tags(s)
	<p>MAVAVPPGRAAGSGWAWRPVARDALLARAFHSCTELRGRFYLVGGLLAGGAREPSSDTWVFDPAARGQAV R LGARGSPPRSHHDAAPVDGRWLCVVGWDGSRRLATVTALDTERGVWEAWTGTGDCPPAGLSSHTCT RI SDRELQVAGREGGIHTQRRYGSYTLRLDPSARTYCYKQEGCHTASRSGHCAALLQTPGPHPGHQLLLFG GCNLAEPEVAGHWSHGKIKEEPPVAPHLMEQLARLVSSGQGSQKGPGLRHHSCSVGPPFAVLFGGETL T RARDTICNDLIYDTRTSPPLWFHFPCADRGMKRMGHRTCLWNDQLYLVGGFGEDGRTASPQVCILDFI</p> <p><b>TRTRPLEQKLISEEDLAANDILDYKDDDDKV</b></p>
<b>Tag:</b>	C-Myc/DDK
<b>Predicted MW:</b>	37.6 kDa
<b>Concentration:</b>	>0.05 µg/µL as determined by microplate BCA method
<b>Purity:</b>	> 80% as determined by SDS-PAGE and Coomassie blue staining
<b>Buffer:</b>	25 mM Tris-HCl, 100 mM glycine, pH 7.3, 10% glycerol
<b>Preparation:</b>	Recombinant protein was captured through anti-DDK affinity column followed by conventional chromatography steps.
<b>Note:</b>	For testing in cell culture applications, please filter before use. Note that you may experience some loss of protein during the filtration process.
<b>Storage:</b>	Store at -80°C.



[View online »](#)

<b>Stability:</b>	Stable for 12 months from the date of receipt of the product under proper storage and handling conditions. Avoid repeated freeze-thaw cycles.
<b>RefSeq:</b>	<u>NP_689579</u>
<b>Locus ID:</b>	126823
<b>UniProt ID:</b>	<u>Q8NEP7</u>
<b>RefSeq Size:</b>	1329
<b>Cytogenetics:</b>	1q23.3
<b>RefSeq ORF:</b>	1047
<b>Synonyms:</b>	KARCA1

**Product images:**


Coomassie blue staining of purified KLHDC9 protein (Cat# [TP318502]). The protein was produced from HEK293T cells transfected with KLHDC9 cDNA clone (Cat# [RC218502]) using MegaTran 2.0 (Cat# [TT210002]).