

Product datasheet for **TP318490L**

CD1C (NM_001765) Human Recombinant Protein

Product data:

| | |
|---------------------------------------|--|
| Product Type: | Recombinant Proteins |
| Description: | Recombinant protein of human CD1c molecule (CD1C), 1 mg |
| Species: | Human |
| Expression Host: | HEK293T |
| Expression cDNA Clone or AA Sequence: | >RC218490 protein sequence Red =Cloning site Green =Tags(s) |

MLFLQFLLLALLLPGGDNADASQEHVSFHVIQIFSFVNQSWARGQGSGWLDELQTHGWDSSEGTIIFLHN
WSKGNFSNEELSDLELLFRFYLFGLTREIQDHASQDYSKYPFEVQVKAGCELHSGKSPGFFQVAFNGLD
LLSFQNTTWVSPGCGSLAQSVCHLLNHQYEGVTETVYNLIRSTCPRFLLGLLDAGKMYVHRQVRPEAWL
SSRPSLGSQQLLVCHASGFYKPVVWTWMRNEQQLGTXHGDILPNADGTWYLQVILEVASEEPAGLSC
RVRHSSLGGQDIILYWGHHFSMNWIALVVIVPLVILVILVLFKHKHCSYQDIL

TRTRPLEQKLISEEDLAANDILDYKDDDDKV

| | |
|----------------|--|
| Tag: | C-Myc/DDK |
| Predicted MW: | 35.7 kDa |
| Concentration: | >0.05 µg/µL as determined by microplate BCA method |
| Purity: | > 80% as determined by SDS-PAGE and Coomassie blue staining |
| Buffer: | 25 mM Tris-HCl, 100 mM glycine, pH 7.3, 10% glycerol |
| Preparation: | Recombinant protein was captured through anti-DDK affinity column followed by conventional chromatography steps. |
| Note: | For testing in cell culture applications, please filter before use. Note that you may experience some loss of protein during the filtration process. |
| Storage: | Store at -80°C. |
| Stability: | Stable for 12 months from the date of receipt of the product under proper storage and handling conditions. Avoid repeated freeze-thaw cycles. |
| RefSeq: | NP_001756 |
| Locus ID: | 911 |



[View online »](#)

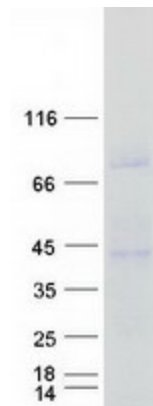
| | |
|---------------|------------------------|
| UniProt ID: | P29017 |
| RefSeq Size: | 2592 |
| Cytogenetics: | 1q23.1 |
| RefSeq ORF: | 999 |
| Synonyms: | BDCA1; CD1; CD1A; R7 |

Summary: This gene encodes a member of the CD1 family of transmembrane glycoproteins, which are structurally related to the major histocompatibility complex (MHC) proteins and form heterodimers with beta-2-microglobulin. The CD1 proteins mediate the presentation of primarily lipid and glycolipid antigens of self or microbial origin to T cells. The human genome contains five CD1 family genes organized in a cluster on chromosome 1. The CD1 family members are thought to differ in their cellular localization and specificity for particular lipid ligands. The protein encoded by this gene is broadly distributed throughout the endocytic system via a tyrosine-based motif in the cytoplasmic tail. Alternatively spliced transcript variants of this gene have been observed, but their full-length nature is not known. [provided by RefSeq, Jul 2008]

Protein Families: Druggable Genome, Transmembrane

Protein Pathways: Hematopoietic cell lineage

Product images:



Coomassie blue staining of purified CD1C protein (Cat# [TP318490]). The protein was produced from HEK293T cells transfected with CD1C cDNA clone (Cat# [RC218490]) using MegaTran 2.0 (Cat# [TT210002]).