

Product datasheet for **TP318487**

FAM61B (LSM14B) (NM_144703) Human Recombinant Protein

Product data:

Product Type: Recombinant Proteins

Description: Recombinant protein of human LSM14B, SCD6 homolog B (*S. cerevisiae*) (LSM14B), 20 µg

Species: Human

Expression Host: HEK293T

Expression cDNA Clone or AA Sequence: >RC218487 representing NM_144703
Red=Cloning site **Green**=Tags(s)

MSGSSGTPYLGSKISLISKAQIRYEGILYITIDTDNSTVALAKVRSFGTEDRPTDRPAPPREEIYEYIIFR
GSDIKDITVCEPPKAQHTLPQDPAIVQSSLGSASASPFQPHVYPSPFRGMAPYGPLAASSLLSQYAASL
GLGAGFPSIPVGKSPMVEQAVQTGSADNLNAKLLPGKGTGTQLNGRQAQPSSKTASDVVQPAAVQAQG
QVNDENRRPQRRRSGNRRTRNRSRQNRPTNVKENTIKFEGDFDFESANAQFNREELDKFKKLNFKDD
KAEKGEEKDLAVVTQSAEAPAEEDLLGPNCYYDKSKSFFDNISSELTSSRRTTWAERKLNTEFTGVSG
RFLRGRSSRGGFRGGGRNGTTRRNPTSHRAGTGRV

TRTRPLEQKLISEEDLAANDILDYKDDDDKV

Tag: C-Myc/DDK

Predicted MW: 41.9 kDa

Concentration: >0.05 µg/µL as determined by microplate BCA method

Purity: > 80% as determined by SDS-PAGE and Coomassie blue staining

Buffer: 25 mM Tris-HCl, 100 mM glycine, pH 7.3, 10% glycerol

Preparation: Recombinant protein was captured through anti-DDK affinity column followed by conventional chromatography steps.

Note: For testing in cell culture applications, please filter before use. Note that you may experience some loss of protein during the filtration process.

Storage: Store at -80°C.

Stability: Stable for 12 months from the date of receipt of the product under proper storage and handling conditions. Avoid repeated freeze-thaw cycles.

RefSeq: [NP_653304](#)

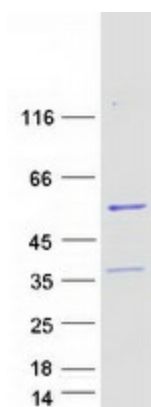
Locus ID: 149986



[View online »](#)

UniProt ID:	Q9BX40
RefSeq Size:	2618
Cytogenetics:	20q13.33
RefSeq ORF:	1155
Synonyms:	bA11M20.3; C20orf40; FAM61B; FT005; LSM13; RAP55B
Summary:	May play a role in control of mRNA translation.[UniProtKB/Swiss-Prot Function]

Product images:



Coomassie blue staining of purified LSM14B protein (Cat# TP318487). The protein was produced from HEK293T cells transfected with LSM14B cDNA clone (Cat# [RC218487]) using MegaTran 2.0 (Cat# [TT210002]).