

Product datasheet for **TP318480M**

ZWINT (NM_032997) Human Recombinant Protein

Product data:

| | |
|---------------------------------------|---|
| Product Type: | Recombinant Proteins |
| Description: | Recombinant protein of human ZW10 interactor (ZWINT), transcript variant 2, 100 µg |
| Species: | Human |
| Expression Host: | HEK293T |
| Expression cDNA Clone or AA Sequence: | >RC218480 protein sequence Red =Cloning site Green =Tags(s) |
| | MEAAETEAEAAALEVLAEVAGILEPVGLQEEAELPAKILVEFVDSQKKDKLLCSQLQVADFLQNILAQE DTAKGLDPLASEDTSRQKAIAAKEQWKELKATYREHVEAIKIGLTKALTMEEAQRKRTQLREAFEQLQA KKQMAMEKRRAVQNQWQLQKEKHLQHLAEVSAEVRERKTGTQQELDGVFQKLGNLKQQAERDKLQRYQ TFLQLLYTLQGKLLFPEAEAEENLPDDKPQQPTRPQEQTGDTMGRDPGVSFKAVGLQPAGDVNLP TRTRPLEQKLISEEDLAANDILDYKDDDDKV |
| Tag: | C-Myc/DDK |
| Predicted MW: | 31.1 kDa |
| Concentration: | >0.05 µg/µL as determined by microplate BCA method |
| Purity: | > 80% as determined by SDS-PAGE and Coomassie blue staining |
| Buffer: | 25 mM Tris-HCl, 100 mM glycine, pH 7.3, 10% glycerol |
| Preparation: | Recombinant protein was captured through anti-DDK affinity column followed by conventional chromatography steps. |
| Note: | For testing in cell culture applications, please filter before use. Note that you may experience some loss of protein during the filtration process. |
| Storage: | Store at -80°C. |
| Stability: | Stable for 12 months from the date of receipt of the product under proper storage and handling conditions. Avoid repeated freeze-thaw cycles. |
| RefSeq: | NP_127490 |
| Locus ID: | 11130 |
| UniProt ID: | O95229 |



[View online >](#)

RefSeq Size: 1878

Cytogenetics: 10q21.1

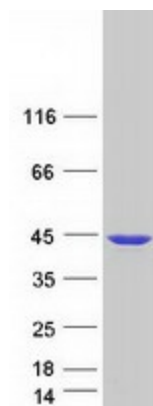
RefSeq ORF: 831

Synonyms: HZwint-1; KNTC2AP; SIP30; ZWINT1

Summary: This gene encodes a protein that is clearly involved in kinetochore function although an exact role is not known. It interacts with ZW10, another kinetochore protein, possibly regulating the association between ZW10 and kinetochores. The encoded protein localizes to prophase kinetochores before ZW10 does and it remains detectable on the kinetochore until late anaphase. It has a uniform distribution in the cytoplasm of interphase cells. Alternatively spliced transcript variants encoding different isoforms have been found for this gene. [provided by RefSeq, Jul 2008]

Protein Families: Druggable Genome

Product images:



Coomassie blue staining of purified ZWINT protein (Cat# [TP318480]). The protein was produced from HEK293T cells transfected with ZWINT cDNA clone (Cat# [RC218480]) using MegaTran 2.0 (Cat# [TT210002]).