

## Product datasheet for **TP318473L**

### TEM8 (ANTXR1) (NM\_053034) Human Recombinant Protein

#### Product data:

Product Type:	Recombinant Proteins
Description:	Recombinant protein of human anthrax toxin receptor 1 (ANTXR1), transcript variant 2, 1 mg
Species:	Human
Expression Host:	HEK293T
Expression cDNA Clone or AA Sequence:	>RC218473 representing NM_053034 Red=Cloning site Green=Tags(s)

MATAERRALGIGFQWLSLATLVLICAGQGGRREDGGPACYGGFDLYFILDKSGSVLHHWNEIYYFVEQLA  
HKFISPLRMSFIVFSTRGTTLMKLTEDREQIRQGLEELQKVLPGGDTYMHEGFERASEQIYYENRQGYR  
TASVIIALTDGELHEDLFFYSEREANRSRDLGAIYVCVGVKDFNETQLARIADSKDHVFPVNDGFQALQG  
IHSILKKSCIEILAAEPSTICAGESFQVVVRGNGFRHARNVDRVLCSEKINDSVTLNEKPFVSDTYLL  
CPAPILKEVGMKAALQVSMNDGLSFISSSVIITTHCSDGSILAIALLLFLLLALALLWWFWPLCCTVI  
IKEVPPPPAESEENKIK

TRTRPLEQKLISEEDLAANDILDYKDDDDKV

Tag:	C-Myc/DDK
Predicted MW:	38.3 kDa
Concentration:	>0.05 µg/µL as determined by microplate BCA method
Purity:	> 80% as determined by SDS-PAGE and Coomassie blue staining
Buffer:	25 mM Tris-HCl, 100 mM glycine, pH 7.3, 10% glycerol
Preparation:	Recombinant protein was captured through anti-DDK affinity column followed by conventional chromatography steps.
Note:	For testing in cell culture applications, please filter before use. Note that you may experience some loss of protein during the filtration process.
Storage:	Store at -80°C.
Stability:	Stable for 12 months from the date of receipt of the product under proper storage and handling conditions. Avoid repeated freeze-thaw cycles.
RefSeq:	<a href="#">NP_444262</a>
Locus ID:	84168



[View online »](#)

UniProt ID: [Q9H6X2](#)

RefSeq Size: 1454

Cytogenetics: 2p13.3

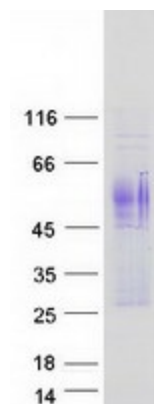
RefSeq ORF: 1104

Synonyms: ATR; GAPO; TEM8

**Summary:** This gene encodes a type I transmembrane protein and is a tumor-specific endothelial marker that has been implicated in colorectal cancer. The encoded protein has been shown to also be a docking protein or receptor for Bacillus anthracis toxin, the causative agent of the disease, anthrax. The binding of the protective antigen (PA) component, of the tripartite anthrax toxin, to this receptor protein mediates delivery of toxin components to the cytosol of cells. Once inside the cell, the other two components of anthrax toxin, edema factor (EF) and lethal factor (LF) disrupt normal cellular processes. Three alternatively spliced variants that encode different protein isoforms have been described. [provided by RefSeq, Oct 2008]

**Protein Families:** Druggable Genome, Transmembrane

### Product images:



Coomassie blue staining of purified ANTXR1 protein (Cat# [TP318473]). The protein was produced from HEK293T cells transfected with ANTXR1 cDNA clone (Cat# [RC218473]) using MegaTran 2.0 (Cat# [TT210002]).