

Product datasheet for **TP318438**

REC114 (NM_001042367) Human Recombinant Protein

Product data:

Product Type:	Recombinant Proteins
Description:	Recombinant protein of human chromosome 15 open reading frame 60 (C15orf60), 20 µg
Species:	Human
Expression Host:	HEK293T
Expression cDNA Clone or AA Sequence:	>RC218438 representing NM_001042367 Red =Cloning site Green =Tags(s)
	 MAEAGKVPLSLGLTGGEAAEWPLQRYARCIPSNTRDPPGPCLEAGTAPCPTWKVFDSNEESGYLVLTVI SGHFFIFQGQTLLEGFSLIGSKDWLKIVRRVDCLLFGTTIKDKSRLFRVQFSGESKEQALEHCCSCVQKL AQYITVQVPDGNIQELQLIPGPPRATESQGKDSAKSVPRQPGSHQHSEQQVCVTAGTGAPDGRSLTQL AQTLASEELPHVYEQSAWGAEELGPFLRLCLMDQNFPAFVEEVEKELKKLAGLRN SGPTRRRLEQKLISEEDLAANDILDYKDDDDKV
Tag:	C-Myc/DDK
Predicted MW:	29 kDa
Concentration:	>0.05 µg/µL as determined by microplate BCA method
Purity:	> 80% as determined by SDS-PAGE and Coomassie blue staining
Buffer:	25 mM Tris-HCl, 100 mM glycine, pH 7.3, 10% glycerol
Preparation:	Recombinant protein was captured through anti-DDK affinity column followed by conventional chromatography steps.
Note:	For testing in cell culture applications, please filter before use. Note that you may experience some loss of protein during the filtration process.
Storage:	Store at -80°C.
Stability:	Stable for 12 months from the date of receipt of the product under proper storage and handling conditions. Avoid repeated freeze-thaw cycles.
RefSeq:	<u>NP_001035826</u>
Locus ID:	283677
UniProt ID:	<u>Q7Z4M0</u>



[View online »](#)

RefSeq Size: 938

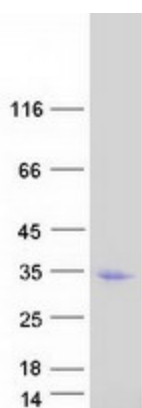
Cytogenetics: 15q24.1

RefSeq ORF: 798

Synonyms: C15orf60; CT147; OOMD10

Summary: The protein encoded by this gene is orthologous to the mouse meiotic recombination protein REC114, which is involved in DNA double-strand break formation during meiosis. The encoded protein is conserved in most eukaryotes and was first discovered and characterized in yeast. [provided by RefSeq, Feb 2017]

Product images:



Coomassie blue staining of purified REC114 protein (Cat# TP318438). The protein was produced from HEK293T cells transfected with REC114 cDNA clone (Cat# [RC218438]) using MegaTran 2.0 (Cat# [TT210002]).