

## Product datasheet for **TP318423M**

### SMCR7 (MIEF2) (NM\_139162) Human Recombinant Protein

#### Product data:

Product Type:	Recombinant Proteins
Description:	Recombinant protein of human Smith-Magenis syndrome chromosome region, candidate 7 (SMCR7), transcript variant 1, 100 µg
Species:	Human
Expression Host:	HEK293T
Expression cDNA Clone or AA Sequence:	>RC218423 protein sequence <b>Red</b> =Cloning site <b>Green</b> =Tags(s)
	<p>MAEFSQKRGKRRSDEGLGSMVDFLLANARLVLGVGGA AVLGIATLAVKRFIDRATSPRDEDDTKADSWKE LSLLKATPHLQPRPPPAALSQPVLPLAPSSSAPEGPAETDPEVTPQLSSPAPLCLTLQERLLAFERDRV IPAAQVALAKQLAGDIALELQAYFRSKFPELPFGAFVPGGPLYDGLQAGAADHVRLLVPLVLEPGLWSLV PGVDTVARDPRCWAVRRTQLEFCPRGSSPWDRFLVGGYLSSRVLELLRKALAASVNWPAIGSLLGCLIR PSMASEELLLEVQHERLELTVAVLVAVPGVDADDRLLAWPLEGLAGNLWLQDLYPVEAARLRALDDHDA GTRRRLLLLCAVCRGCSALGQLGRGHLTQVVLRLGEDNVDWTEELGERFLQALELLIGSLEQASLPCH FNPSVNLFFSSLREEEIDDIGYALYSGLQEPEGLL</p> <p><b>TRTRPLEQKLISEEDLAANDILDYKDDDDKV</b></p>
Tag:	C-Myc/DDK
Predicted MW:	49.1 kDa
Concentration:	>0.05 µg/µL as determined by microplate BCA method
Purity:	> 80% as determined by SDS-PAGE and Coomassie blue staining
Buffer:	25 mM Tris-HCl, 100 mM glycine, pH 7.3, 10% glycerol
Preparation:	Recombinant protein was captured through anti-DDK affinity column followed by conventional chromatography steps.
Note:	For testing in cell culture applications, please filter before use. Note that you may experience some loss of protein during the filtration process.
Storage:	Store at -80°C.
Stability:	Stable for 12 months from the date of receipt of the product under proper storage and handling conditions. Avoid repeated freeze-thaw cycles.



[View online »](#)

RefSeq: [NP\\_631901](#)

Locus ID: 125170

UniProt ID: [Q96C03](#)

RefSeq Size: 2610

Cytogenetics: 17p11.2

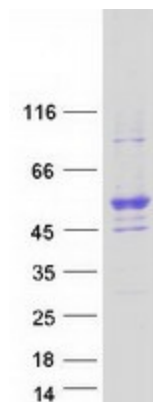
RefSeq ORF: 1362

Synonyms: COXPD49; MID49; SMCR7

**Summary:** This gene encodes an outer mitochondrial membrane protein that functions in the regulation of mitochondrial morphology. It can directly recruit the fission mediator dynamin-related protein 1 (Drp1) to the mitochondrial surface. The gene is located within the Smith-Magenis syndrome region on chromosome 17. Alternative splicing results in multiple transcript variants encoding different isoforms. [provided by RefSeq, Jun 2011]

**Protein Families:** Transmembrane

### Product images:



Coomassie blue staining of purified MIEF2 protein (Cat# [TP318423]). The protein was produced from HEK293T cells transfected with MIEF2 cDNA clone (Cat# [RC218423]) using MegaTran 2.0 (Cat# [TT210002]).