

Product datasheet for **TP318423L**

SMCR7 (MIEF2) (NM_139162) Human Recombinant Protein

Product data:

| | |
|---------------------------------------|--|
| Product Type: | Recombinant Proteins |
| Description: | Recombinant protein of human Smith-Magenis syndrome chromosome region, candidate 7 (SMCR7), transcript variant 1, 1 mg |
| Species: | Human |
| Expression Host: | HEK293T |
| Expression cDNA Clone or AA Sequence: | >RC218423 protein sequence Red =Cloning site Green =Tags(s) |

MAEFSQKRGKRRSDEGLGSMVDFLLANARLVLGVGGAAVLGIATLAVKRFIDRATSPRDEDDTKADSWKE
LSLLKATPHLQPRPPPAALSQPVLPLAPSSSAPEGPAETDPEVTPQLSSPAPLCLTLQERLLAFERDRV
IPAAQVALAKQLAGDIALELQAYFRSKFPELPGAFVPGGPLYDGLQAGAADHVRLVPLVLEPGLWSLV
PGVDTVARDPRCWAVRRTQLEFCPRGSSPWDRFLVGGYLSSRVLELLLRKALAASVNWPAIGSLLGCLIR
PSMASELLLEVQHERLELTVAVLVAVPGVDADDRLLAWPLEGLAGNLWLQDLYPVEAARLRALDDHDA
GTRRRLLLLLCAVCRGCSALGQLGRGHLTQVVLRLGEDNVDWTEEALGERFLQALELLIGSLEQASLPCH
FNPSVNLFSSLREEEIDDIGYALYSGLQEPEGLL

TRTRPLEQKLISEEDLAANDILDYKDDDDKV

| | |
|----------------|--|
| Tag: | C-Myc/DDK |
| Predicted MW: | 49.1 kDa |
| Concentration: | >0.05 µg/µL as determined by microplate BCA method |
| Purity: | > 80% as determined by SDS-PAGE and Coomassie blue staining |
| Buffer: | 25 mM Tris-HCl, 100 mM glycine, pH 7.3, 10% glycerol |
| Preparation: | Recombinant protein was captured through anti-DDK affinity column followed by conventional chromatography steps. |
| Note: | For testing in cell culture applications, please filter before use. Note that you may experience some loss of protein during the filtration process. |
| Storage: | Store at -80°C. |
| Stability: | Stable for 12 months from the date of receipt of the product under proper storage and handling conditions. Avoid repeated freeze-thaw cycles. |



[View online >](#)

RefSeq: [NP_631901](#)

Locus ID: 125170

UniProt ID: [Q96C03](#)

RefSeq Size: 2610

Cytogenetics: 17p11.2

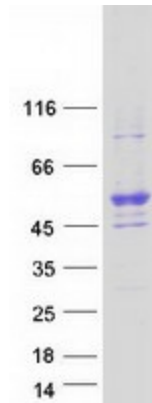
RefSeq ORF: 1362

Synonyms: COXPD49; MID49; SMCR7

Summary: This gene encodes an outer mitochondrial membrane protein that functions in the regulation of mitochondrial morphology. It can directly recruit the fission mediator dynamin-related protein 1 (Drp1) to the mitochondrial surface. The gene is located within the Smith-Magenis syndrome region on chromosome 17. Alternative splicing results in multiple transcript variants encoding different isoforms. [provided by RefSeq, Jun 2011]

Protein Families: Transmembrane

Product images:



Coomassie blue staining of purified MIEF2 protein (Cat# [TP318423]). The protein was produced from HEK293T cells transfected with MIEF2 cDNA clone (Cat# [RC218423]) using MegaTran 2.0 (Cat# [TT210002]).