

## Product datasheet for TP318395

### CMTM7 (NM\_181472) Human Recombinant Protein

#### Product data:

Product Type:	Recombinant Proteins
Description:	Recombinant protein of human CKLF-like MARVEL transmembrane domain containing 7 (CMTM7), transcript variant 2, 20 µg
Species:	Human
Expression Host:	HEK293T
Expression cDNA Clone or AA Sequence:	>RC218395 representing NM_181472 <b>Red</b> =Cloning site <b>Green</b> =Tags(s)
	 MSHGAGLVRTTCSSGSALGPGAGAAQPSASPLEGLLDLSYPRTHAALLKVAQMVTLLIAFICVRSSLWTN YSAYSYFEVVTICDLIMILAFYLVHLFRFYRVLTCISWPLSIFGFMATFLCMASIWLSYKISCVTQSTDA AV  <b>TRTRPLEQKLISEEDLAANDILDYKDDDDKV</b>
Tag:	C-Myc/DDK
Predicted MW:	15.3 kDa
Concentration:	>0.05 µg/µL as determined by microplate BCA method
Purity:	> 80% as determined by SDS-PAGE and Coomassie blue staining
Buffer:	25 mM Tris-HCl, 100 mM glycine, pH 7.3, 10% glycerol
Preparation:	Recombinant protein was captured through anti-DDK affinity column followed by conventional chromatography steps.
Note:	For testing in cell culture applications, please filter before use. Note that you may experience some loss of protein during the filtration process.
Storage:	Store at -80°C.
Stability:	Stable for 12 months from the date of receipt of the product under proper storage and handling conditions. Avoid repeated freeze-thaw cycles.
RefSeq:	<a href="#">NP_852137</a>
Locus ID:	112616
UniProt ID:	<a href="#">Q96FZ5</a>



[View online »](#)

RefSeq Size: 1270

Cytogenetics: 3p22.3

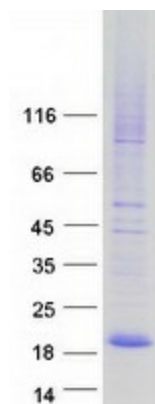
RefSeq ORF: 426

Synonyms: CKLFSF7

**Summary:** This gene belongs to the chemokine-like factor gene superfamily, a novel family that is similar to the chemokine and transmembrane 4 superfamilies. This gene is one of several chemokine-like factor genes located in a cluster on chromosome 3. This gene acts as a tumor suppressor that regulates G1/S transition in the cell cycle, and epidermal growth factor receptor/protein kinase B signaling during tumor pathogenesis. Alternative splicing results in multiple transcript variants encoding different isoforms. [provided by RefSeq, Feb 2016]

**Protein Families:** Transmembrane

### Product images:



Coomassie blue staining of purified CMTM7 protein (Cat# TP318395). The protein was produced from HEK293T cells transfected with CMTM7 cDNA clone (Cat# [RC218395]) using MegaTran 2.0 (Cat# [TT210002]).