

## Product datasheet for **TP318384**

### SCYL1 (NM\_001048218) Human Recombinant Protein

#### Product data:

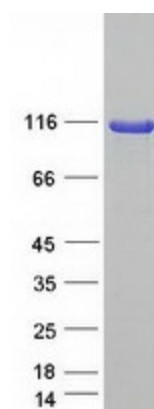
<b>Product Type:</b>	Recombinant Proteins
<b>Description:</b>	Recombinant protein of human SCY1-like 1 ( <i>S. cerevisiae</i> ) (SCYL1), transcript variant B, 20 µg
<b>Species:</b>	Human
<b>Expression Host:</b>	HEK293T
<b>Expression cDNA Clone or AA Sequence:</b>	>RC218384 representing NM_001048218 <b>Red</b> =Cloning site <b>Green</b> =Tags(s)
	<p>MWFFARDPVRDFPFELIPEPPEGGLPGPWALHRGRKKATGSPVSIFVYDVKPGAEETQVAKAAFKRFKT LRHPNILAYIDGLETEKCLHVVTEAVTPLGIYLKARVEAGGLKELEISWGLHQIVKALSFLVNDCSLIHN NVCMAAVFVDRAGEWKLGGLDYMYSAQNGGGPPRKGIPLEQYDPELADSSGRVVREKWSADMWRLGC LIWEVFNGPLPRAAALRNP GKIPKTLVPHYCELVGANPKVRPNPARFLQNCRAPGGFMSNRFVETNLFLE EIQIKEPAEKQKFFQELSKSLDAFPEDFCRHKVLQLLTAFEFGNAGAVLTPLFKVGKFLSAEEYQQKI IPVVVKMFSSTDRAMRIRLLQQMEQFIQYLDEPTVNTQIFPHVHGFDTNPAIREQTVKSMALLAPKLN EANLNVELMKHFARLQAKDEQGPIRCNTTVCLGKIGSYLSASTRHRVLTSAFSRATRDPFAPS RVAGVLG FAATHNLYSMNDCAQKILPVL CGLTVDP EKSVRDQAFKAIRSFLSKLESVSEDPTQLEEVEKDVAHAASP GMGGAAASWAGWAVTGVSSLTSKLIRSHPTTAPTETNIPQRPTPEGHWETQEEDKDTAEDSSTADRWDDE DWGSLEQEAESVLAQQDDWSTGGQVSRASQVNSDHSKSSPESDWSSWEAEGSWEQGWQEPSSQEPSPD GTRLASEYNWGGPESSDKGDPFATLSARPSTQPRPDSWGEDNWEGLTDSRQVKAELARKKREERRREME AKRAERKVAKGPMKLGARKLD</p> <p><b>TRTRPLEQKLISEEDLAANDILDYKDDDDKV</b></p>
<b>Tag:</b>	C-Myc/DDK
<b>Predicted MW:</b>	87.9 kDa
<b>Concentration:</b>	>0.05 µg/µL as determined by microplate BCA method
<b>Purity:</b>	> 80% as determined by SDS-PAGE and Coomassie blue staining
<b>Buffer:</b>	25 mM Tris-HCl, 100 mM glycine, pH 7.3, 10% glycerol
<b>Preparation:</b>	Recombinant protein was captured through anti-DDK affinity column followed by conventional chromatography steps.
<b>Note:</b>	For testing in cell culture applications, please filter before use. Note that you may experience some loss of protein during the filtration process.



[View online »](#)

<b>Storage:</b>	Store at -80°C.
<b>Stability:</b>	Stable for 12 months from the date of receipt of the product under proper storage and handling conditions. Avoid repeated freeze-thaw cycles.
<b>RefSeq:</b>	<a href="#">NP_001041683</a>
<b>Locus ID:</b>	57410
<b>UniProt ID:</b>	<a href="#">Q96KG9</a>
<b>RefSeq Size:</b>	2616
<b>Cytogenetics:</b>	11q13.1
<b>RefSeq ORF:</b>	2373
<b>Synonyms:</b>	GKLP; HT019; NKTL; NTKL; P105; SCAR21; TAPK; TEIF; TRAP
<b>Summary:</b>	This gene encodes a transcriptional regulator belonging to the SCYL1-like family of kinase-like proteins. The protein has a divergent N-terminal kinase domain that is thought to be catalytically inactive, and can bind specific DNA sequences through its C-terminal domain. It activates transcription of the telomerase reverse transcriptase and DNA polymerase beta genes. The protein has been localized to the nucleus, and also to the cytoplasm and centrosomes during mitosis. Multiple transcript variants encoding different isoforms have been found for this gene. [provided by RefSeq, Jul 2008]
<b>Protein Families:</b>	Druggable Genome, Protein Kinase

### Product images:



Coomassie blue staining of purified SCYL1 protein (Cat# TP318384). The protein was produced from HEK293T cells transfected with SCYL1 cDNA clone (Cat# [RC218384]) using MegaTran 2.0 (Cat# [TT210002]).