

## Product datasheet for TP318368M

### GUCY2D (NM\_000180) Human Recombinant Protein

#### Product data:

Product Type:	Recombinant Proteins
Description:	Recombinant protein of human guanylate cyclase 2D, membrane (retina-specific) (GUCY2D), 100 µg
Species:	Human
Expression Host:	HEK293T
Expression cDNA Clone or AA Sequence:	>RC218368 representing NM_000180 Red=Cloning site Green=Tags(s)

MTACARRAGGLPDPGLCGPAWWAPSLPRLPRALPRLPLLLLLLLLQPPALSAVFTVGVLPWACDPIFSR  
 ARPDLAARLAAARLNRPGLAGGPRFEVALLPEPCRTPGSLGAVSSALARVSGLVGPVNPAACRPAELLA  
 EEAGIALVPWGPCWTQAEETTAPAVTPAADALYALLRAFGWARVALVTAPQDLWVEAGRSLSTALRARGL  
 PVASVTSMEPLDLSGAREALRKVRDGPRTAVIMVMHSVLLGGEEQRYLLEAAEELGLTDGSLVFLPFDT  
 IHYALSPGPEALAAANSSQLRRAHDAVLTLRHCPSEGSVLDLRRRAQERRELPDLNLQVSPFLGTI  
 YDAVFLARGVAEAAAAGGRWVSGAAVARHIRDAQVPGFCGDLGGDEEPPFVLLDTPAAGDRLFATYML  
 DPARGSFLSAGTRMHFPRGGSAPGDPSCWFDPNNICGGGLEPGLVFLGLFLLVVMGLAGAFLAHYVRHR  
 LLHMQMVSQPNKIILTVDDITFLHPHGGTSRKVAQGSRSSLGARSMSDIRSGPSQHLDSPNIGVYEGDRV  
 WLKKFPGDQHIAIRPATKTAFAKQLQELRHENVALYLGLFLARGAEGPAALWEGNLAVSEHCTRGSQDL  
 LAQREIKLDWMFKSSLLDLIKGIRYLHHRGVAHGRLKSRNCIVDGRFVLKITDHGHGRLLAEQKVLPEP  
 PRAEDQLWTAPELLRDPALERRGTLAGDVFLAIMQEVVCRSAPYAMLELTPEEVQVRVSPPLCRPL  
 VSMDQAPVECILLMKQCWAEQPELRPSMDHTFDLFDKNINKGRKTNIIIDSMRLMLEYSSNLEDLIRERTE  
 ELELEKQKTDRLLTQMLPPSVAEALKTGTPVEPEYFEQVTLYFSDIVGFTTISAMSEPIEVDLLNDLYT  
 LFDIIGSHDVYKVETIGDAYMVASGLPQRNGQRHAAEIANMSLDILSAVGTFRMRHMPEVPVIRIRGLH  
 SGPCVAGVGLTMPRYCLFGDTVNTASRMESTGLPYRIHVNLSTVGILRALDSGYQVELRGRTELKKGKA  
 EDTFWLVGRRGFNKPIPKPPDLQPGSSNHGISLQEIIPERRRRKLEKARPGQFS

TRTRPLEQKLISEEDLAANDILDYKDDDDKV

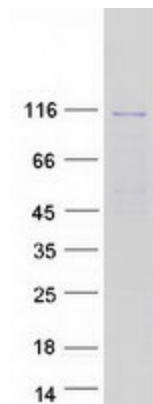
Tag:	C-Myc/DDK
Predicted MW:	119.9 kDa
Concentration:	>0.05 µg/µL as determined by microplate BCA method
Purity:	> 80% as determined by SDS-PAGE and Coomassie blue staining
Buffer:	25 mM Tris-HCl, 100 mM glycine, pH 7.3, 10% glycerol



[View online »](#)

<b>Preparation:</b>	Recombinant protein was captured through anti-DDK affinity column followed by conventional chromatography steps.
<b>Note:</b>	For testing in cell culture applications, please filter before use. Note that you may experience some loss of protein during the filtration process.
<b>Storage:</b>	Store at -80°C.
<b>Stability:</b>	Stable for 12 months from the date of receipt of the product under proper storage and handling conditions. Avoid repeated freeze-thaw cycles.
<b>RefSeq:</b>	<a href="#">NP_000171</a>
<b>Locus ID:</b>	3000
<b>UniProt ID:</b>	<a href="#">Q02846</a>
<b>RefSeq Size:</b>	3621
<b>Cytogenetics:</b>	17p13.1
<b>RefSeq ORF:</b>	3309
<b>Synonyms:</b>	CACD1; CG-E; CORD5; CORD6; CSNB11; CYGD; GUC1A4; GUC2D; LCA; LCA1; RCD2; retGC; RETGC-1; ROS-GC1; ROSGC
<b>Summary:</b>	This gene encodes a retina-specific guanylate cyclase, which is a member of the membrane guanylyl cyclase family. Like other membrane guanylyl cyclases, this enzyme has a hydrophobic amino-terminal signal sequence followed by a large extracellular domain, a single membrane spanning domain, a kinase homology domain, and a guanylyl cyclase catalytic domain. In contrast to other membrane guanylyl cyclases, this enzyme is not activated by natriuretic peptides. Mutations in this gene result in Leber congenital amaurosis and cone-rod dystrophy-6 diseases. [provided by RefSeq, Dec 2008]
<b>Protein Families:</b>	Druggable Genome, Protein Kinase, Transmembrane
<b>Protein Pathways:</b>	Olfactory transduction, Purine metabolism

### Product images:



Coomassie blue staining of purified GUCY2D protein (Cat# [TP318368]). The protein was produced from HEK293T cells transfected with GUCY2D cDNA clone (Cat# [RC218368]) using MegaTran 2.0 (Cat# [TT210002]).