

## Product datasheet for **TP318368L**

### **GUCY2D (NM\_000180) Human Recombinant Protein**

#### **Product data:**

<b>Product Type:</b>	Recombinant Proteins
<b>Description:</b>	Recombinant protein of human guanylate cyclase 2D, membrane (retina-specific) (GUCY2D), 1 mg
<b>Species:</b>	Human
<b>Expression Host:</b>	HEK293T
<b>Expression cDNA Clone or AA Sequence:</b>	>RC218368 representing NM_000180 <b>Red</b> =Cloning site <b>Green</b> =Tags(s)

MTACARRAGGLPDPGLCGPAWWAPSLPRLPRALPRLPLLLLLLLLQPPALSAVFTVGVLPWACDPIFSR  
ARPDLAARLAAARLNRPGLAGGPRFEVALLPEPCRTPGSLGAVSSALARVSGLVGPVNPAACRPAELLA  
EEAGIALVPWGPCWTQAEGTTAPAVTPAADALYALLRAFGWARVALVTAPQDLWVEAGRSLSTALRARGL  
PVASVTSMEPLDLSGAREALRKVRDGPRTAVIMVMHSVLLGGEEQRYLLEAAEELGLTDGSLVFLPFDT  
IHYALSPGPEALAAANSSQLRRAHDAVLTLRHCPSEGSVLDLRRRAQERRELPDLNLQVSPFLGTI  
YDAVFLARGVAEAAAAGGRWVSGAAVARHIRDAQVPGFCGDLGGDEEPPFVLLDTPAAGDRLFATYML  
DPARGSFLSAGTRMHFPRGGSAPGDPSCWFDPNNICGGGLEPGLVFLGLFLLVGMGLAGAFLAHYVRHR  
LLHMQMVSQPNKIILTVDDITFLHPHGGTSRKVAQGSRSSLGARSMSDIRSGPSQHLDSPNIGVYEGDRV  
WLKKFPGDQHAIARPATKTAFAKQLQELRHENVALYLGLFLARGAEGPAALWEGNLAVSEHCTRGSQDL  
LAQREIKLDWMFKSSLLDLIKGIRYLHHRGVAHGRLKSRNCIVDGRFVLKIDHGHGRLLAEQKVLPEP  
PRAEDQLWTAPELLRDPALERRGTLAGDVFLAIMQEVVCRSAPYAMLELTPEEVQVRVSPPLCRPL  
VSMDQAPVECILLMKQCWAEQPELRPSMDHTFDLFDLKNINKGRKTNIIIDSMRLMLEYSSNLEDLIRERTE  
ELELEKQKTDRLLTQMLPPSVAEALKTGTPVEPEYFEQVTLYFSDIVGFTTISAMSEPIEVDLLNDLYT  
LFDIIGSHDVYKVETIGDAYMVASGLPQRNGQRHAAEIANMSLDILSAVGTFRMRHMPEVPVIRIRGLH  
SGPCVAGVGLTMPRYCLFGDTVNTASRMESTGLPYRIHVNLSTVGILRALDSGYQVELRGRTELKKGKA  
EDTFWLVGRRGFNKPIPKPPDLQPGSSNHGISLQEIIPERRRRKLEKARPGQFS

**TRTRPLEQKLISEEDLAANDILDYKDDDDKV**

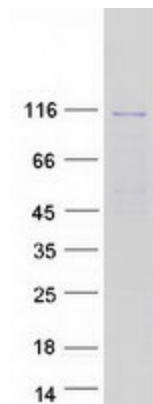
<b>Tag:</b>	C-Myc/DDK
<b>Predicted MW:</b>	119.9 kDa
<b>Concentration:</b>	>0.05 µg/µL as determined by microplate BCA method
<b>Purity:</b>	> 80% as determined by SDS-PAGE and Coomassie blue staining
<b>Buffer:</b>	25 mM Tris-HCl, 100 mM glycine, pH 7.3, 10% glycerol



[View online »](#)

<b>Preparation:</b>	Recombinant protein was captured through anti-DDK affinity column followed by conventional chromatography steps.
<b>Note:</b>	For testing in cell culture applications, please filter before use. Note that you may experience some loss of protein during the filtration process.
<b>Storage:</b>	Store at -80°C.
<b>Stability:</b>	Stable for 12 months from the date of receipt of the product under proper storage and handling conditions. Avoid repeated freeze-thaw cycles.
<b>RefSeq:</b>	<a href="#">NP_000171</a>
<b>Locus ID:</b>	3000
<b>UniProt ID:</b>	<a href="#">Q02846</a>
<b>RefSeq Size:</b>	3621
<b>Cytogenetics:</b>	17p13.1
<b>RefSeq ORF:</b>	3309
<b>Synonyms:</b>	CACD1; CG-E; CORD5; CORD6; CSNB11; CYGD; GUC1A4; GUC2D; LCA; LCA1; RCD2; retGC; RETGC-1; ROS-GC1; ROSGC
<b>Summary:</b>	This gene encodes a retina-specific guanylate cyclase, which is a member of the membrane guanylyl cyclase family. Like other membrane guanylyl cyclases, this enzyme has a hydrophobic amino-terminal signal sequence followed by a large extracellular domain, a single membrane spanning domain, a kinase homology domain, and a guanylyl cyclase catalytic domain. In contrast to other membrane guanylyl cyclases, this enzyme is not activated by natriuretic peptides. Mutations in this gene result in Leber congenital amaurosis and cone-rod dystrophy-6 diseases. [provided by RefSeq, Dec 2008]
<b>Protein Families:</b>	Druggable Genome, Protein Kinase, Transmembrane
<b>Protein Pathways:</b>	Olfactory transduction, Purine metabolism

### Product images:



Coomassie blue staining of purified GUCY2D protein (Cat# [TP318368]). The protein was produced from HEK293T cells transfected with GUCY2D cDNA clone (Cat# [RC218368]) using MegaTran 2.0 (Cat# [TT210002]).