

Product datasheet for **TP318359M**

LNK (SH2B3) (NM_005475) Human Recombinant Protein

Product data:

Product Type:	Recombinant Proteins
Description:	Recombinant protein of human SH2B adaptor protein 3 (SH2B3), 100 µg
Species:	Human
Expression Host:	HEK293T
Expression cDNA Clone or AA Sequence:	>RC218359 representing NM_005475 Red =Cloning site Green =Tags(s)

MNGPALQPSSPSSAPSASPAAAPRGWSEFCELHAVAAAARELARQYWLFAREHPQHAPLRAELVSLQFTDL
FQRYFCREVRDGRAPGRDYRDTGRGPPAKAEASPEPGPGAAPGLPKARSSEELAPRPPGPCSFQHFRR
SLRHIFRRRSAGELPAAHTAAAPGTPGEEAETPARPGLAKKFLPWSLAREPPPEALKEAVLRYSLADEAS
MDSGARWQRGLALRRAPGPDGPDVLELFDPPKSSRPKLQAACSSIQEVRRCTRLEMPDNLYTFVLKVK
DRTDIIFEVGDEQQLNSWMAELSECTGRGLESTEAMHIPSALPSTSSSPRGSTDLSLNQGASPGGLLDP
ACQKTDHFLSCYPWFHGPISRVKAAQLVQLQGPDAHGVFLVRQSETRRGEYVLTFFNFQGIAKHLRSLTE
RGQCRVQHLHFPSVVDMLHHFQRSPIPLECGAACDVRSSYVVVVVQPPGSCNTVLPFPLPHWDESLP
HWGSELGLPHLSSSGCPRGLSPEGLPGRSSPPEQIFHLVPSPEELANSLQHLEHEPVNRARDSDYEMDSS
SRSHLRAIDNQYTPL

TRTRPLEQKLISEEDLAANDILDYKDDDDKV

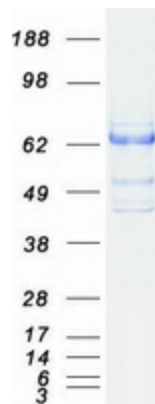
Tag:	C-Myc/DDK
Predicted MW:	63 kDa
Concentration:	>0.05 µg/µL as determined by microplate BCA method
Purity:	> 80% as determined by SDS-PAGE and Coomassie blue staining
Buffer:	25 mM Tris-HCl, 100 mM glycine, pH 7.3, 10% glycerol
Preparation:	Recombinant protein was captured through anti-DDK affinity column followed by conventional chromatography steps.
Note:	For testing in cell culture applications, please filter before use. Note that you may experience some loss of protein during the filtration process.
Storage:	Store at -80°C.



[View online »](#)

Stability:	Stable for 12 months from the date of receipt of the product under proper storage and handling conditions. Avoid repeated freeze-thaw cycles.
RefSeq:	NP_005466
Locus ID:	10019
UniProt ID:	Q9UQQ2 , Q59H48
RefSeq Size:	5423
Cytogenetics:	12q24.12
RefSeq ORF:	1725
Synonyms:	IDDM20; LNK
Summary:	This gene encodes a member of the SH2B adaptor family of proteins, which are involved in a range of signaling activities by growth factor and cytokine receptors. The encoded protein is a key negative regulator of cytokine signaling and plays a critical role in hematopoiesis. Mutations in this gene have been associated with susceptibility to celiac disease type 13 and susceptibility to insulin-dependent diabetes mellitus. Alternatively spliced transcript variants encoding different isoforms have been found for this gene. [provided by RefSeq, Apr 2014]
Protein Pathways:	Neurotrophin signaling pathway

Product images:



Coomassie blue staining of purified SH2B3 protein (Cat# [TP318359]). The protein was produced from HEK293T cells transfected with SH2B3 cDNA clone (Cat# [RC218359]) using MegaTran 2.0 (Cat# [TT210002]).