

Product datasheet for TP318359

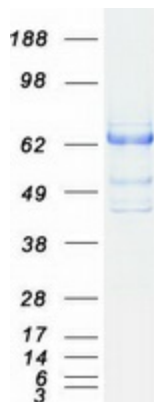
LNK (SH2B3) (NM_005475) Human Recombinant Protein

Product data:

| | |
|-------------------|--|
| Product Type: | Recombinant Proteins |
| Description: | Recombinant protein of human SH2B adaptor protein 3 (SH2B3) |
| Species: | Human |
| Expression Host: | HEK293T |
| Tag: | C-Myc/DDK |
| Predicted MW: | 63 kDa |
| Concentration: | >50 ug/mL as determined by microplate BCA method |
| Purity: | > 80% as determined by SDS-PAGE and Coomassie blue staining |
| Buffer: | 25 mM Tris.HCl, pH 7.3, 100 mM glycine, 10% glycerol |
| Preparation: | Recombinant protein was captured through anti-DDK affinity column followed by conventional chromatography steps. |
| Storage: | Store at -80°C. |
| Stability: | Stable for 12 months from the date of receipt of the product under proper storage and handling conditions. Avoid repeated freeze-thaw cycles. |
| RefSeq: | NP_005466 |
| Locus ID: | 10019 |
| RefSeq Size: | 5423 |
| Cytogenetics: | 12q24.12 |
| RefSeq ORF: | 1725 |
| Synonyms: | IDDM20; LNK |
| Summary: | This gene encodes a member of the SH2B adaptor family of proteins, which are involved in a range of signaling activities by growth factor and cytokine receptors. The encoded protein is a key negative regulator of cytokine signaling and plays a critical role in hematopoiesis. Mutations in this gene have been associated with susceptibility to celiac disease type 13 and susceptibility to insulin-dependent diabetes mellitus. Alternatively spliced transcript variants encoding different isoforms have been found for this gene. [provided by RefSeq, Apr 2014] |
| Protein Pathways: | Neurotrophin signaling pathway |



[View online »](#)

Product images:

Coomassie blue staining of purified SH2B3 protein (Cat# TP318359). The protein was produced from HEK293T cells transfected with SH2B3 cDNA clone (Cat# [RC218359]) using MegaTran 2.0 (Cat# [TT210002]).