

Product datasheet for TP318337L

C16orf13 (METTL26) (NM_032366) Human Recombinant Protein

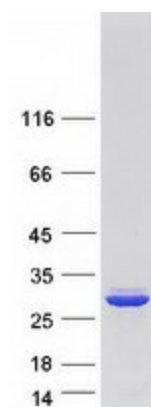
Product data:

Product Type:	Recombinant Proteins
Description:	Recombinant protein of human chromosome 16 open reading frame 13 (C16orf13), transcript variant 1, 1 mg
Species:	Human
Expression Host:	HEK293T
Expression cDNA Clone or AA Sequence:	>RC218337 representing NM_032366 Red =Cloning site Green =Tags(s)
	MLVAAAERNKDPILHVLQRQYLDPAQRGVRVLEVASGSGQHAAHFARAFPLAEWQPSDVDQRCLDSIAAT TQAQGLTNVKAPLHLDVTWGWGHWGGILPQSLDLLLCINMAHVSPLRCTEGLFRAAGHLLKPRALLITYG PYAINGKISPQSNVDFDLMLRCRNPEWGLRDTALLEDLGKASGLLLERMVDMPANNKCLIFRKN
	TRTRPLEQKLISEEDLAANDILDYKDDDDKV
Tag:	C-Myc/DDK
Predicted MW:	22.4 kDa
Concentration:	>0.05 µg/µL as determined by microplate BCA method
Purity:	> 80% as determined by SDS-PAGE and Coomassie blue staining
Buffer:	25 mM Tris-HCl, 100 mM glycine, pH 7.3, 10% glycerol
Preparation:	Recombinant protein was captured through anti-DDK affinity column followed by conventional chromatography steps.
Note:	For testing in cell culture applications, please filter before use. Note that you may experience some loss of protein during the filtration process.
Storage:	Store at -80°C.
Stability:	Stable for 12 months from the date of receipt of the product under proper storage and handling conditions. Avoid repeated freeze-thaw cycles.
RefSeq:	<u>NP_115742</u>
Locus ID:	84326
UniProt ID:	<u>Q96S19</u>



[View online »](#)

RefSeq Size: 854
Cytogenetics: 16p13.3
RefSeq ORF: 612
Synonyms: C16orf13; JFP2

Product images:

Coomassie blue staining of purified METTL26 protein (Cat# [TP318337]). The protein was produced from HEK293T cells transfected with METTL26 cDNA clone (Cat# [RC218337]) using MegaTran 2.0 (Cat# [TT210002]).