

Product datasheet for **TP318325L**

RGP1 (NM_001080496) Human Recombinant Protein

Product data:

Product Type:	Recombinant Proteins
Description:	Recombinant protein of human RGP1 retrograde golgi transport homolog (<i>S. cerevisiae</i>) (RGP1), 1 mg
Species:	Human
Expression Host:	HEK293T
Expression cDNA Clone or AA Sequence:	>RC218325 representing NM_001080496 Red =Cloning site Green =Tags(s)

MIEVAELSRGPVFLAGEALECVWTVTNPLPPTATSASSEALAWASAQIHCQFHASESRVALPPPDSSQP
DVQPDSQTVFLPHRGERGQCILSTPPKILFCDLRLDPGESKSYSYSEVLPIEGPPSFRGQSVKYVYKLT
GCQRVNSPITLLRVPLRVLVTGLQDVRFPQDEAVAPSSPFLEEDGGKDSWLAELAGERLMAATSCRS
LHLYNISDGRGKVGTFGIFKSVYRLGEDVWGTNLNLEGTVACLQFSVSLQTEERVQPEYQRRRGAGGVPS
VSHVTHARHQESCLHTTRTSFSLPIPLSSTPGFCTAIVSLKWRLHFEFVTSREPLVLLPPVEQPEPTTW
TGPEQVPVDTFSWDLPIKVLPTSPTLASYAAPGPSTSTITI

TRTRPLEQKLISEEDLAANDILDYKDDDDKV

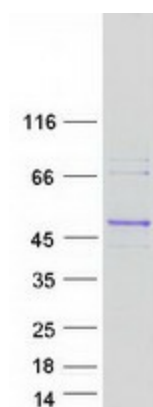
Tag:	C-Myc/DDK
Predicted MW:	46.2 kDa
Concentration:	>0.05 µg/µL as determined by microplate BCA method
Purity:	> 80% as determined by SDS-PAGE and Coomassie blue staining
Buffer:	25 mM Tris-HCl, 100 mM glycine, pH 7.3, 10% glycerol
Preparation:	Recombinant protein was captured through anti-DDK affinity column followed by conventional chromatography steps.
Note:	For testing in cell culture applications, please filter before use. Note that you may experience some loss of protein during the filtration process.
Storage:	Store at -80°C.
Stability:	Stable for 12 months from the date of receipt of the product under proper storage and handling conditions. Avoid repeated freeze-thaw cycles.
RefSeq:	<u>NP_001073965</u>



[View online »](#)

Locus ID:	9827
UniProt ID:	Q92546
RefSeq Size:	1296
Cytogenetics:	9p13.3
RefSeq ORF:	1173
Synonyms:	KIAA0258
Summary:	The RIC1-RGP1 complex acts as a guanine nucleotide exchange factor (GEF), which activates RAB6A by exchanging bound GDP for free GTP and may thereby required for efficient fusion of endosome-derived vesicles with the Golgi compartment. The RIC1-RGP1 complex participates in the recycling of mannose-6-phosphate receptors.[UniProtKB/Swiss-Prot Function]

Product images:



Coomassie blue staining of purified RGP1 protein (Cat# [TP318325]). The protein was produced from HEK293T cells transfected with RGP1 cDNA clone (Cat# [RC218325]) using MegaTran 2.0 (Cat# [TT210002]).