

Product datasheet for TP318310

PSMA (FOLH1) (NM_004476) Human Recombinant Protein

Product data:

Product Type:	Recombinant Proteins
Description:	Recombinant protein of human folate hydrolase (prostate-specific membrane antigen) 1 (FOLH1), transcript variant 1, 20 µg
Species:	Human
Expression Host:	HEK293T
Expression cDNA Clone or AA Sequence:	>RC218310 representing NM_004476 Red=Cloning site Green=Tags(s)

MWNLLHETDSAVATARRPRWLCAGALVLAGGFFLLGFLFGWFIKSSNEATNITPKHNMKAFLDELKAENI
KKFLYNFTQIPHLAGTEQNFQLAKQIQSQWKEFGLDSVELAHYDVLLSYPNKTHPNYISIINEDGNEIFN
TSLFEPPIPGYENVSDIVPPFSAFSPQGMPEGDLVYVNYARTEDFFKLERDMKINCSGKIVIARYGKVF
GNKVKNAQLAGAKGVILYSDPADYFAPGVKSYPDGWNLPGGGVQQRGNILNLGAGDPLTPGYPANAYR
RGIAEAVGLPSIPVHPIGYDDAQKLEKMGGSAPPDSSWRGSLKVPYNVGPGFTGNFSTQKVKMHIHSTN
EVTRIYNVIGTLRGAVEPDRYVILGGHRDSWVFGGIDPQSGAAVVHEIVRSFGTLKKEGWRRPRRTILFAS
WDAEEFLLGSTEWAEENSRLQERGVAYINADSSIEGNYTLRVDCTPLMYSLVHNLTKELKSPDEGFEG
KSLYESWTKKSPSEFSGMPRISKLGSGNDFEVFFQRLGIASGRARYTKNWETNKFSGYPLYHSHVYETYE
LVEKFYDPMFKYHLTVAQVRGGMVFEANSIVLPFDCRDYAVVLRKYADKIYSISMKHPQEMKTYSVSFD
SLFSAVKNFTEIASKFSERLQDFDKSNPIVLRMMNDQLMFLERAFIDPLGLPDRPFYRHVIYAPSSHNKY
AGESFPGIYDALFDIESKVDPKAWGEVKRQIYVAAFTVQAAAETLSEVA

TRTRPLEQKLISEEDLAANDILDYKDDDDKV

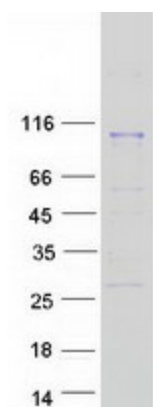
Tag:	C-Myc/DDK
Predicted MW:	84.2 kDa
Concentration:	>0.05 µg/µL as determined by microplate BCA method
Purity:	> 80% as determined by SDS-PAGE and Coomassie blue staining
Buffer:	25 mM Tris-HCl, 100 mM glycine, pH 7.3, 10% glycerol
Preparation:	Recombinant protein was captured through anti-DDK affinity column followed by conventional chromatography steps.
Note:	For testing in cell culture applications, please filter before use. Note that you may experience some loss of protein during the filtration process.



[View online »](#)

Storage:	Store at -80°C.
Stability:	Stable for 12 months from the date of receipt of the product under proper storage and handling conditions. Avoid repeated freeze-thaw cycles.
RefSeq:	NP_004467
Locus ID:	2346
UniProt ID:	Q04609
RefSeq Size:	2653
Cytogenetics:	11p11.12
RefSeq ORF:	2250
Synonyms:	FGCP; FOLH; GCP2; GCP1I; mGCP; NAALAD1; NAALAdase; PSM; PSMA
Summary:	<p>This gene encodes a type II transmembrane glycoprotein belonging to the M28 peptidase family. The protein acts as a glutamate carboxypeptidase on different alternative substrates, including the nutrient folate and the neuropeptide N-acetyl-L-aspartyl-L-glutamate and is expressed in a number of tissues such as prostate, central and peripheral nervous system and kidney. A mutation in this gene may be associated with impaired intestinal absorption of dietary folates, resulting in low blood folate levels and consequent hyperhomocysteinemia. Expression of this protein in the brain may be involved in a number of pathological conditions associated with glutamate excitotoxicity. In the prostate the protein is up-regulated in cancerous cells and is used as an effective diagnostic and prognostic indicator of prostate cancer. This gene likely arose from a duplication event of a nearby chromosomal region. Alternative splicing gives rise to multiple transcript variants encoding several different isoforms. [provided by RefSeq, Jul 2010]</p>
Protein Families:	Druggable Genome, Protease, Transmembrane

Product images:



Coomassie blue staining of purified FOLH1 protein (Cat# TP318310). The protein was produced from HEK293T cells transfected with FOLH1 cDNA clone (Cat# [RC218310]) using MegaTran 2.0 (Cat# [TT210002]).