

Product datasheet for **TP318307M**

PRPF31 (NM_015629) Human Recombinant Protein

Product data:

Product Type:	Recombinant Proteins
Description:	Recombinant protein of human PRP31 pre-mRNA processing factor 31 homolog (<i>S. cerevisiae</i>) (PRPF31), 100 µg
Species:	Human
Expression Host:	HEK293T
Expression cDNA Clone or AA Sequence:	>RC218307 representing NM_015629 Red =Cloning site Green =Tags(s)

MSLADELLADLEEAEEEEEGGSYGEEEEPAIEDVQEETQLDLSGDSVKTIAKLWDSKMF AEIMMKIEEY
ISKQAKASEVMGPVEAAPEYRVIVDANNLTVEIENELNIIHKFIRDKYSKRFPELESVLPNALDYIRTVK
ELGNSLDKCKNNENLQQILT NATIMVVS TASTTQGGQLSEEELEERLEEACDMALELNASKHRIEYEVES
RMSFIAPNLSIIIGASTAAKIMGVAGGLTNLSKMPACNIMLLGAQRKTL SGFSSTSVLPHTGYIYHSDIV
QSLPPDLRRKAARLVAAKCTLAARVDSFHESTEGKVG YELKDEIERKFDKWQEP PPVKQVKPLPAPLDGQ
RKKRGRRYRKMKERLGLTEIRKQANRMSFGEIEEDAYQEDLGFSLGHLGKSGSGRVRQTQVNEATKARI
SKTLQRTLQKQSVVYGGKSTIRDRSSGTASSVAFTPLQGLEIVNPQAAEKVAEANQKYFSSMAEFLKVK
GEKSGLMST

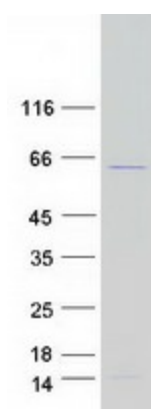
TRTRPLEQKLISEEDLAANDILDYKDDDDKV

Tag:	C-Myc/DDK
Predicted MW:	55.3 kDa
Concentration:	>0.05 µg/µL as determined by microplate BCA method
Purity:	> 80% as determined by SDS-PAGE and Coomassie blue staining
Buffer:	25 mM Tris-HCl, 100 mM glycine, pH 7.3, 10% glycerol
Preparation:	Recombinant protein was captured through anti-DDK affinity column followed by conventional chromatography steps.
Note:	For testing in cell culture applications, please filter before use. Note that you may experience some loss of protein during the filtration process.
Storage:	Store at -80°C.



[View online »](#)

Stability:	Stable for 12 months from the date of receipt of the product under proper storage and handling conditions. Avoid repeated freeze-thaw cycles.
RefSeq:	NP_056444
Locus ID:	26121
UniProt ID:	Q8WWY3
RefSeq Size:	2153
Cytogenetics:	19q13.42
RefSeq ORF:	1497
Synonyms:	NY-BR-99; PRP31; RP11; SNRNP61
Summary:	This gene encodes a component of the spliceosome complex and is one of several retinitis pigmentosa-causing genes. When the gene product is added to the spliceosome complex, activation occurs.[provided by RefSeq, Jan 2009]
Protein Families:	Druggable Genome
Protein Pathways:	Spliceosome

Product images:

Coomassie blue staining of purified PRPF31 protein (Cat# [TP318307]). The protein was produced from HEK293T cells transfected with PRPF31 cDNA clone (Cat# [RC218307]) using MegaTran 2.0 (Cat# [TT210002]).