

## Product datasheet for TP318307

### PRPF31 (NM\_015629) Human Recombinant Protein

#### Product data:

Product Type:	Recombinant Proteins
Description:	Recombinant protein of human PRP31 pre-mRNA processing factor 31 homolog ( <i>S. cerevisiae</i> ) (PRPF31), 20 µg
Species:	Human
Expression Host:	HEK293T
Expression cDNA Clone or AA Sequence:	>RC218307 representing NM_015629 <b>Red</b> =Cloning site <b>Green</b> =Tags(s)

MSLADELLADLEEAEEEEEGGSYGEEEEPAIEDVQEETQLDLSGDSVKTIAKLWDSKMFAEIMMKIEEY  
ISKQAKASEVMGPVEAAPEYRVIVDANNLTVEIENELNIIHKFIRDKYSKRFELESVLPNALDYIRTVK  
ELGNLSDKCKNNENLQQILTNAIMVSVTASTTQGGQLSEEELERLEEACDMALELNASKHRIEYEVES  
RMSFIAPNLSIIIGASTAAKIMGVAGGLTNLSKMPACNIMLLGAQRKTLSGFSSTSVLPHTGYIYHSDIV  
QSLPPDLRRKAARLVAAKCTLAARVDSFHSTEGKVGVELKDEIERKFDKWQEPKQVKPLPAPLDGQ  
RKKRGGRRYRKMKERLGLTEIRKQANRMSFGEIEEDAYQEDLGFSLGHLGKSGSGRVQRQTQVNEATKARI  
SKTLQRTLQKQSVVYGGKSTIRDSSGTASSVAFTPLQGLEIVNPQAAEKKVAEANQKYFSSMAEFLKVK  
GEKSGLMST

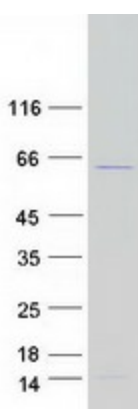
**TRTRPLEQKLISEEDLAANDILDYKDDDDKV**

Tag:	C-Myc/DDK
Predicted MW:	55.3 kDa
Concentration:	>0.05 µg/µL as determined by microplate BCA method
Purity:	> 80% as determined by SDS-PAGE and Coomassie blue staining
Buffer:	25 mM Tris-HCl, 100 mM glycine, pH 7.3, 10% glycerol
Preparation:	Recombinant protein was captured through anti-DDK affinity column followed by conventional chromatography steps.
Note:	For testing in cell culture applications, please filter before use. Note that you may experience some loss of protein during the filtration process.
Storage:	Store at -80°C.



[View online »](#)

<b>Stability:</b>	Stable for 12 months from the date of receipt of the product under proper storage and handling conditions. Avoid repeated freeze-thaw cycles.
<b>RefSeq:</b>	<a href="#">NP_056444</a>
<b>Locus ID:</b>	26121
<b>UniProt ID:</b>	<a href="#">Q8WWY3</a>
<b>RefSeq Size:</b>	2153
<b>Cytogenetics:</b>	19q13.42
<b>RefSeq ORF:</b>	1497
<b>Synonyms:</b>	NY-BR-99; PRP31; RP11; SNRNP61
<b>Summary:</b>	This gene encodes a component of the spliceosome complex and is one of several retinitis pigmentosa-causing genes. When the gene product is added to the spliceosome complex, activation occurs.[provided by RefSeq, Jan 2009]
<b>Protein Families:</b>	Druggable Genome
<b>Protein Pathways:</b>	Spliceosome

**Product images:**

Coomassie blue staining of purified PRPF31 protein (Cat# TP318307). The protein was produced from HEK293T cells transfected with PRPF31 cDNA clone (Cat# [RC218307]) using MegaTran 2.0 (Cat# [TT210002]).