

Product datasheet for **TP318300M**

HPR (NM_020995) Human Recombinant Protein

Product data:

Product Type:	Recombinant Proteins
Description:	Recombinant protein of human haptoglobin-related protein (HPR), 100 µg
Species:	Human
Expression Host:	HEK293T
Expression cDNA Clone or AA Sequence:	>RC218300 representing NM_020995 Red =Cloning site Green =Tags(s)

MSDLGAVISLLLWGRQLFALYSGNDVTDISDDRFKPKPEIANGYVEHLFRYQCKNYYRLRTEGDGVYTLN
DKKQWINKAVGDKLPECEAVCGKPKNPANPVQRILGGHLDKGSFPWQAKMVSHHNLTTGATLINEQWLL
TTAKNLFLNHSENATAKDIAPTLTLVYGKKQLVEIEKWLHPNYHQVDIGLIKQKVLVNERVMPICLP
SKNYAEVGRVGYVSGWGQSDNFKLTDHLKYVMLPVADQYDCITHYEGSTCPKWKAPKSPVGVQPILNEHT
FCVGMISKYQEDTCYGDAGSAFAVHDL EEDTWYAAGILSFDKSCAFAEYGVYVKVTSIQHWVQKTI AEN

TRTRPLEQKLI SEEDLAANDILDYKDDDDK V

Tag:	C-Myc/DDK
Predicted MW:	38.8 kDa
Concentration:	>0.05 µg/µL as determined by microplate BCA method
Purity:	> 80% as determined by SDS-PAGE and Coomassie blue staining
Buffer:	25 mM Tris-HCl, 100 mM glycine, pH 7.3, 10% glycerol
Preparation:	Recombinant protein was captured through anti-DDK affinity column followed by conventional chromatography steps.
Note:	For testing in cell culture applications, please filter before use. Note that you may experience some loss of protein during the filtration process.
Storage:	Store at -80°C.
Stability:	Stable for 12 months from the date of receipt of the product under proper storage and handling conditions. Avoid repeated freeze-thaw cycles.
RefSeq:	NP_066275
Locus ID:	3250



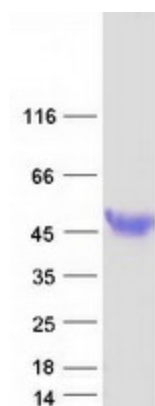
[View online »](#)

UniProt ID: [P00739](#)
RefSeq Size: 1245
Cytogenetics: 16q22.2
RefSeq ORF: 1044
Synonyms: A-259H10.2; HP

Summary: This gene encodes a haptoglobin-related protein that binds hemoglobin as efficiently as haptoglobin. Unlike haptoglobin, plasma concentration of this protein is unaffected in patients with sickle cell anemia and extensive intravascular hemolysis, suggesting a difference in binding between haptoglobin-hemoglobin and haptoglobin-related protein-hemoglobin complexes to CD163, the hemoglobin scavenger receptor. This protein may also be a clinically important predictor of recurrence of breast cancer. [provided by RefSeq, Oct 2011]

Protein Families: Druggable Genome, Protease, Secreted Protein

Product images:



Coomassie blue staining of purified HPR protein (Cat# [TP318300]). The protein was produced from HEK293T cells transfected with HPR cDNA clone (Cat# [RC218300]) using MegaTran 2.0 (Cat# [TT210002]).