

Product datasheet for **TP318292M**

CAMLG (NM_001745) Human Recombinant Protein

Product data:

| | |
|---------------------------------------|---|
| Product Type: | Recombinant Proteins |
| Description: | Recombinant protein of human calcium modulating ligand (CAMLG), 100 µg |
| Species: | Human |
| Expression Host: | HEK293T |
| Expression cDNA Clone or AA Sequence: | >RC218292 protein sequence Red =Cloning site Green =Tags(s) |
| | MESMAVATDGGGERPGVPAGSGLSASQRRRAELRRRLLMNSEQRINRIMGFHRPGSGAEEESQTKSKQQDS DKLNSLSVPSVSKRVVLGDSVSTGTTDQGGVAEVKGTQLGDKLDSFIKPPCCSSDVNLELRQRNRGDLT ADSVQRGSRHGLEQYLSRFEEAMKLRKQLISEKPSQEDGNTTEEFDSFRIFRLVGCALLALGVRAVCKY LSIFAPFLTQLAYMGLYKYFPKSEKIKTTVLTAAALLSGIPAEVINRSMDTYSKMGEVFTDLCVYFFT FIFCHELLDYWGSEVP TRTRPLEQKLISEEDLAANDILDYKDDDDKV |
| Tag: | C-Myc/DDK |
| Predicted MW: | 32.8 kDa |
| Concentration: | >0.05 µg/µL as determined by microplate BCA method |
| Purity: | > 80% as determined by SDS-PAGE and Coomassie blue staining |
| Buffer: | 25 mM Tris-HCl, 100 mM glycine, pH 7.3, 10% glycerol |
| Preparation: | Recombinant protein was captured through anti-DDK affinity column followed by conventional chromatography steps. |
| Note: | For testing in cell culture applications, please filter before use. Note that you may experience some loss of protein during the filtration process. |
| Storage: | Store at -80°C. |
| Stability: | Stable for 12 months from the date of receipt of the product under proper storage and handling conditions. Avoid repeated freeze-thaw cycles. |
| RefSeq: | <u>NP_001736</u> |
| Locus ID: | 819 |



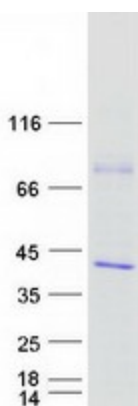
[View online »](#)

UniProt ID: [P49069](#)
RefSeq Size: 2255
Cytogenetics: 5q31.1
RefSeq ORF: 888
Synonyms: CAML; GET2

Summary: The immunosuppressant drug cyclosporin A blocks a calcium-dependent signal from the T-cell receptor (TCR) that normally leads to T-cell activation. When bound to cyclophilin B, cyclosporin A binds and inactivates the key signaling intermediate calcineurin. The protein encoded by this gene functions similarly to cyclosporin A, binding to cyclophilin B and acting downstream of the TCR and upstream of calcineurin by causing an influx of calcium. This integral membrane protein appears to be a new participant in the calcium signal transduction pathway, implicating cyclophilin B in calcium signaling, even in the absence of cyclosporin. [provided by RefSeq, Jul 2008]

Protein Families: Druggable Genome

Product images:



Coomassie blue staining of purified CAMLG protein (Cat# [TP318292]). The protein was produced from HEK293T cells transfected with CAMLG cDNA clone (Cat# [RC218292]) using MegaTran 2.0 (Cat# [TT210002]).