

Product datasheet for **TP318292L**

CAMLG (NM_001745) Human Recombinant Protein

Product data:

Product Type: Recombinant Proteins

Description: Recombinant protein of human calcium modulating ligand (CAMLG), 1 mg

Species: Human

Expression Host: HEK293T

**Expression cDNA Clone
or AA Sequence:** >RC218292 protein sequence
Red=Cloning site **Green**=Tags(s)

MESMAVATDGGGERPGVPAGSGLSASQRRRAELRRRKLMMNSEQRINRIMGFHRPGSGAEEESQTKSKQQDS
DKLNSLSVPSVSKRVVLGDSVSTGTTDQGGVAEVKGTQLGDKLDSFIKPPCCSSDVNLELRQRNRGDLT
ADSVQRGSRHGLEQYLSRFEEAMKLRKQLISEKPSQEDGNTTEEFDSFRIFRLVGCALLALGVRAVCKY
LSIFAPFLTQLAYMGLYKYFPKSEKIKTTVLTAAALLSGIPAEVINRSMDSYKMGVFTDLCVYFFT
FIFCHELLDYWGSEVP

TRTRPLEQKLISEEDLAANDILDYKDDDDKV

Tag: C-Myc/DDK

Predicted MW: 32.8 kDa

Concentration: >0.05 µg/µL as determined by microplate BCA method

Purity: > 80% as determined by SDS-PAGE and Coomassie blue staining

Buffer: 25 mM Tris-HCl, 100 mM glycine, pH 7.3, 10% glycerol

Preparation: Recombinant protein was captured through anti-DDK affinity column followed by conventional chromatography steps.

Note: For testing in cell culture applications, please filter before use. Note that you may experience some loss of protein during the filtration process.

Storage: Store at -80°C.

Stability: Stable for 12 months from the date of receipt of the product under proper storage and handling conditions. Avoid repeated freeze-thaw cycles.

RefSeq: [NP_001736](#)

Locus ID: 819



[View online »](#)

UniProt ID: [P49069](#)

RefSeq Size: 2255

Cytogenetics: 5q31.1

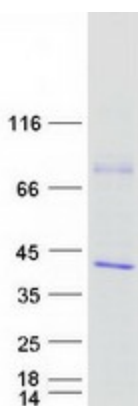
RefSeq ORF: 888

Synonyms: CAML; GET2

Summary: The immunosuppressant drug cyclosporin A blocks a calcium-dependent signal from the T-cell receptor (TCR) that normally leads to T-cell activation. When bound to cyclophilin B, cyclosporin A binds and inactivates the key signaling intermediate calcineurin. The protein encoded by this gene functions similarly to cyclosporin A, binding to cyclophilin B and acting downstream of the TCR and upstream of calcineurin by causing an influx of calcium. This integral membrane protein appears to be a new participant in the calcium signal transduction pathway, implicating cyclophilin B in calcium signaling, even in the absence of cyclosporin. [provided by RefSeq, Jul 2008]

Protein Families: Druggable Genome

Product images:



Coomassie blue staining of purified CAMLG protein (Cat# [TP318292]). The protein was produced from HEK293T cells transfected with CAMLG cDNA clone (Cat# [RC218292]) using MegaTran 2.0 (Cat# [TT210002]).