

## Product datasheet for **TP318237**

### PKI alpha (PKIA) (NM\_006823) Human Recombinant Protein

#### Product data:

Product Type:	Recombinant Proteins
Description:	Recombinant protein of human protein kinase (cAMP-dependent, catalytic) inhibitor alpha (PKIA), transcript variant 6, 20 µg
Species:	Human
Expression Host:	HEK293T
Expression cDNA Clone or AA Sequence:	>RC218237 protein sequence <b>Red</b> =Cloning site <b>Green</b> =Tags(s)
	MTDVETTYADFIASGRTGRRNAIHDILVSSASGNSNELALKLAGLDINKTEGEEDAQRSSTEQSGEAQGE AAKSES
	<b>TRTRPLEQKLISEEDLAANDILDYKDDDDKV</b>
Tag:	C-Myc/DDK
Predicted MW:	7.8 kDa
Concentration:	>0.05 µg/µL as determined by microplate BCA method
Purity:	> 80% as determined by SDS-PAGE and Coomassie blue staining
Buffer:	25 mM Tris-HCl, 100 mM glycine, pH 7.3, 10% glycerol
Preparation:	Recombinant protein was captured through anti-DDK affinity column followed by conventional chromatography steps.
Note:	For testing in cell culture applications, please filter before use. Note that you may experience some loss of protein during the filtration process.
Storage:	Store at -80°C.
Stability:	Stable for 12 months from the date of receipt of the product under proper storage and handling conditions. Avoid repeated freeze-thaw cycles.
RefSeq:	<a href="#">NP_006814</a>
Locus ID:	5569
UniProt ID:	<a href="#">P61925</a>
RefSeq Size:	4215



[View online »](#)

Cytogenetics: 8q21.13

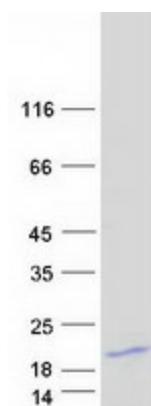
RefSeq ORF: 228

Synonyms: PRKACN1

**Summary:** The protein encoded by this gene is a member of the cAMP-dependent protein kinase (PKA) inhibitor family. This protein was demonstrated to interact with and inhibit the activities of both C alpha and C beta catalytic subunits of the PKA. Alternatively spliced transcript variants encoding the same protein have been reported. [provided by RefSeq, Jul 2008]

Protein Families: Druggable Genome

### Product images:



Coomassie blue staining of purified PKIA protein (Cat# TP318237). The protein was produced from HEK293T cells transfected with PKIA cDNA clone (Cat# [RC218237]) using MegaTran 2.0 (Cat# [TT210002]).