

Product datasheet for TP318236M

SOX1 (NM_005986) Human Recombinant Protein

Product data:

Product Type: Recombinant Proteins

Description: Recombinant protein of human SRY (sex determining region Y)-box 1 (SOX1), 100 µg

Species: Human

Expression Host: HEK293T

Expression cDNA Clone or AA Sequence: >RC218236 representing NM_005986

Red=Cloning site Green=Tags(s)

MYSMMMETDLHSPGGAQAPTNLSPAGAGGGGGGGGGGGGGGGGAKANQDRVKRP MNAFMWWSRGQRRKMA
QENPKMHNSEISKRLGAEWKVMSEAEKRPFIDEAKRLRALHMKEHPDYKYRPRRKTLLKKDKYSLAGG
LLAAGAGGGGA AVAMGVGVGAAAVGQRLESPGGAAGGGYAHVNGWANGAYPGSVAAAAAAMMQEAQ
LAYGQHPGAGGAHPAHPAHPHPHPAHPHPNPQPMHRYDMGALQYSPISNSQGYMSASPSGYGGLPYGA
AAAAAAGGAHQNSAVAAAAAASSGALGALGSLVKSEPSGSPAPAHSRAPCPGDLREMISMYP
GEGGDPAAAAAAQ SRLHSLPQHYQGAGAGVNGTVPLTHI

SGPTRRRLEQKLISEEDLAANDILDYKDDDDKV

Tag: C-Myc/DDK

Predicted MW: 38.8 kDa

Concentration: >0.05 µg/µL as determined by microplate BCA method

Purity: > 80% as determined by SDS-PAGE and Coomassie blue staining

Buffer: 25 mM Tris-HCl, 100 mM glycine, pH 7.3, 10% glycerol

Preparation: Recombinant protein was captured through anti-DDK affinity column followed by conventional chromatography steps.

Note: For testing in cell culture applications, please filter before use. Note that you may experience some loss of protein during the filtration process.

Storage: Store at -80°C.

Stability: Stable for 12 months from the date of receipt of the product under proper storage and handling conditions. Avoid repeated freeze-thaw cycles.

RefSeq: [NP_005977](#)



[View online »](#)

Locus ID: 6656

UniProt ID: [O00570](#)

RefSeq Size: 4108

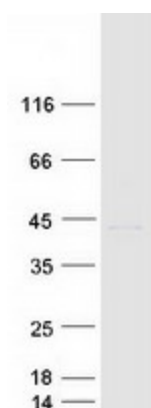
Cytogenetics: 13q34

RefSeq ORF: 1173

Summary: This intronless gene encodes a member of the SOX (SRY-related HMG-box) family of transcription factors involved in the regulation of embryonic development and in the determination of the cell fate. The encoded protein may act as a transcriptional activator after forming a protein complex with other proteins. In mice, a similar protein regulates the gamma-crystallin genes and is essential for lens development. [provided by RefSeq, Jul 2008]

Protein Families: Adult stem cells, ES Cell Differentiation/IPS, Induced pluripotent stem cells, Transmembrane

Product images:



Coomassie blue staining of purified SOX1 protein (Cat# [TP318236]). The protein was produced from HEK293T cells transfected with SOX1 cDNA clone (Cat# [RC218236]) using MegaTran 2.0 (Cat# [TT210002]).