

## Product datasheet for **TP318203L**

### **RPL19 (NM\_000981) Human Recombinant Protein**

#### **Product data:**

<b>Product Type:</b>	Recombinant Proteins
<b>Description:</b>	Recombinant protein of human ribosomal protein L19 (RPL19), 1 mg
<b>Species:</b>	Human
<b>Expression Host:</b>	HEK293T
<b>Expression cDNA Clone or AA Sequence:</b>	>RC218203 representing NM_000981 <b>Red</b> =Cloning site <b>Green</b> =Tags(s)
	 MSMLRLQKRLASSVLRGKKKVWLDPNETNEIANANSRQQIRKLIKDGLIIRKPVTVHSRARCRCRNTLAR RKGRHMGIGKRKGTANARMPEKVTWMRRMRILRLLRRYRESKKIDRHMYHSLYLKVKGNVFKNKRILME HIHKLKADKARKKLLADQAEARRSKTKEARKRREERLQAKKEEIIKTLKSKEETKK  <b>TRTRPLEQKLISEEDLAANDILDYKDDDDKV</b>
<b>Tag:</b>	C-Myc/DDK
<b>Predicted MW:</b>	23.3 kDa
<b>Concentration:</b>	>0.05 µg/µL as determined by microplate BCA method
<b>Purity:</b>	> 80% as determined by SDS-PAGE and Coomassie blue staining
<b>Buffer:</b>	25 mM Tris-HCl, 100 mM glycine, pH 7.3, 10% glycerol
<b>Preparation:</b>	Recombinant protein was captured through anti-DDK affinity column followed by conventional chromatography steps.
<b>Note:</b>	For testing in cell culture applications, please filter before use. Note that you may experience some loss of protein during the filtration process.
<b>Storage:</b>	Store at -80°C.
<b>Stability:</b>	Stable for 12 months from the date of receipt of the product under proper storage and handling conditions. Avoid repeated freeze-thaw cycles.
<b>RefSeq:</b>	<u><a href="#">NP_000972</a></u>
<b>Locus ID:</b>	6143
<b>UniProt ID:</b>	<u><a href="#">P84098</a></u>
<b>RefSeq Size:</b>	748



[View online »](#)

Cytogenetics: 17q12

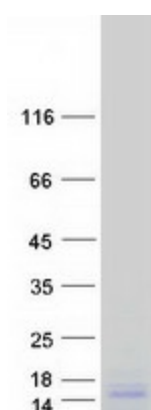
RefSeq ORF: 588

Synonyms: L19

**Summary:** Ribosomes, the organelles that catalyze protein synthesis, consist of a small 40S subunit and a large 60S subunit. Together these subunits are composed of 4 RNA species and approximately 80 structurally distinct proteins. This gene encodes a ribosomal protein that is a component of the 60S subunit. The protein belongs to the L19E family of ribosomal proteins. It is located in the cytoplasm. As is typical for genes encoding ribosomal proteins, there are multiple processed pseudogenes of this gene dispersed through the genome. [provided by RefSeq, Jul 2008]

**Protein Pathways:** Ribosome

### Product images:



Coomassie blue staining of purified RPL19 protein (Cat# [TP318203]). The protein was produced from HEK293T cells transfected with RPL19 cDNA clone (Cat# [RC218203]) using MegaTran 2.0 (Cat# [TT210002]).