

Product datasheet for TP318163L

JMJD6 (NM_001081461) Human Recombinant Protein

Product data:

Product Type:	Recombinant Proteins
Description:	Recombinant protein of human jumonji domain containing 6 (JMJD6), transcript variant 1, 1 mg
Species:	Human
Expression Host:	HEK293T
Expression cDNA Clone or AA Sequence:	>RC218163 representing NM_001081461 Red =Cloning site Green =Tags(s)
	<p>MNHKSKKRIREAKRSARPELKDSLWTRHNYYESFSLSPAADVADNVERADALQLSVEEFVERYERPYKPV VLLNAQEGWSAQEKWTLERLKRKYRNQKFKCGEDNDGYSVKMKMKYIYEMESTRDDSPYIFDSSYGEH PKRRKLELDYKVPKFFTDLLFQYAGEKRRPPYRWFVMGPPRSGTGIHIDPLGTSAWNALVQGHKRWCLFP TSTPRELIKVTRDEGGNQQDEAITWFNVIYPRQLPTWPPEFKPLEILQKPGETVFPVGGWWHVLNLDL TIAITQNFASSTNFPVWHKTVRGRPKLSRKWYRILKQEHPELAVLADSVLDLQESTGIASDSSSDSSSS SSSSSDSDSECESGSEGDGTVHRRKKRRTCSMVGNGDTSQDDCVSKERSSSRIRDTCGGRAHP</p> <p>TRTRPLEQKLISEEDLAANDILDYKDDDDKV</p>
Tag:	C-Myc/DDK
Predicted MW:	47.4 kDa
Concentration:	>0.05 µg/µL as determined by microplate BCA method
Purity:	> 80% as determined by SDS-PAGE and Coomassie blue staining
Buffer:	25 mM Tris-HCl, 100 mM glycine, pH 7.3, 10% glycerol
Preparation:	Recombinant protein was captured through anti-DDK affinity column followed by conventional chromatography steps.
Note:	For testing in cell culture applications, please filter before use. Note that you may experience some loss of protein during the filtration process.
Storage:	Store at -80°C.
Stability:	Stable for 12 months from the date of receipt of the product under proper storage and handling conditions. Avoid repeated freeze-thaw cycles.
RefSeq:	<u>NP_001074930</u>



[View online »](#)

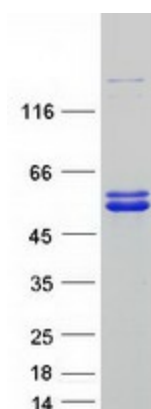
Locus ID: 23210
UniProt ID: [Q6NYC1](#)
RefSeq Size: 5445
Cytogenetics: 17q25.1
RefSeq ORF: 1242

Synonyms: PSR; PTDSR; PTDSR1

Summary: This gene encodes a nuclear protein with a JmjC domain. JmjC domain-containing proteins are predicted to function as protein hydroxylases or histone demethylases. This protein was first identified as a putative phosphatidylserine receptor involved in phagocytosis of apoptotic cells; however, subsequent studies have indicated that it does not directly function in the clearance of apoptotic cells, and questioned whether it is a true phosphatidylserine receptor. Multiple transcript variants encoding different isoforms have been found for this gene. [provided by RefSeq, Jul 2008]

Protein Families: Druggable Genome, ES Cell Differentiation/IPS

Product images:



Coomassie blue staining of purified JMJD6 protein (Cat# [TP318163]). The protein was produced from HEK293T cells transfected with JMJD6 cDNA clone (Cat# [RC218163]) using MegaTran 2.0 (Cat# [TT210002]).