

Product datasheet for TP318146

Laminin (LAMC3) (NM_006059) Human Recombinant Protein

Product data:

Product Type: Recombinant Proteins
Description: Purified recombinant protein of Homo sapiens laminin, gamma 3 (LAMC3), 20 µg
Species: Human
Expression Host: HEK293T
Expression cDNA Clone or AA Sequence: >RC218146 representing NM_006059
Red=Cloning site Green=Tags(s)

```
MAAAALLLGLALLAPRAAGAGMGACYDGAGRPQRCLPVFENAAFGRLAQASHTCGSPPEDFCPHVGAAGA
GAHCQRCDAAADPQRHHNASYLDFHSQDESTWWQSPSMAFGVQYPTSVNITLRLGKAYEITYVRLKFHTS
RPESFAIYKRSRADGPWEPYQFYSASCQKTYGRPEGQYLRPGEDERVAFACTSEFSDISPLSGGNVAFSTL
EGRPSAYNFEESPGLQEWVTSTELLISLDRLNFTGDDIFKDPKVLQSYYYAVSDFSVGGRCKCNGHASEC
GPDVAGQLACRCQHNTTGTDCERCLPFFQDRPWARGTAEAAHECLPCNCSESECTFDRELFRSTGHGG
RCHHCRDHTAGPHCERCQENFYHWDPRMPCQPCDCQSAGSLHLQDDTGTACKPTVTGWKCDRCLPGFH
SLSEGGCRPCTCNPAGSLDTC DPRSGRPCKENVEGNLCDRCPGTFNLQPHNPAGCSSFCYGHSHKVA
STAQFQVHHILSDFHQGAEGWWARSVGGSEHPPQWSPNGVLLSPEDEELTAPEKFLGDQRFSYQPLIL
TFRVPPGDSPLPVQLRLEGTGLALSLRHSSLSGPQDAGHPREVELRFHLQETSEDVAPLPPFFHFQRLLA
NLTSLRLRVSPGSPAGPVFLTEVRLTSARPLSPPASWVEICSCPTGYTGQFCESCAPGYKREMPQGGP
YASCVPCTCNQHGTCDPNTGICVCSHHTGEPSCERCLPGFYGNPFAGQADDQCPCPGQSACTTIPESR
EVVCTHCPPGQRGRRCVDDGGFFGDPLGLFGHPQPCHQCQCSGNVDPNAVGNCDPLSGHCLRCLHNTTG
DHCEHCQEGFYGSALAPRPADKCMPCSCHPQGSVSEQMPCDPVTGQCCLPHVTARDCSRCPYGFDDLQP
GRGCRSCKCHPLGSQEDQCHPKTGQCTCRPGVTGQACDRCLGFFGFSIKGCRACRCSPLGAASAQCHEN
GTCVCRPGFEGYKCDRCHDNFFLTADGTHCQQCPSCYALVKEEA AKL KARLTLTEGWLQGSDCGSPWGPL
DILLGEAPRGDVYQGHLLPGAREAFLEQMMSLEGAVKAAREQLQRLNKGARCAQAGSQKTCTQLADLEA
VLESSEEEILHAAAILASLEIPQEGPSQPTKWSHLATEARALARSHRDTATKIAATAWRALLASNTSYAL
LWNLLEGRVALETQRDLEDYQEVQAAQKALRTAVAEVLPEAESVLATVQVQVQVQVQVQVQVQVQVQVQV
QKSRAEDLGLKAKALEKTVA SWQH MATEAARTLQ TAAQATLRQTEPLTKLHQEARAALTQASSSVQAATV
TVMGARTLLADLEGMKLQFPRPKDQAALQRKADSVSDRLLADTRKKTQAERMLGNAAPLSSSAKKKGRE
AEVLAKDSAKLAKALLRERKQAHRRASRLTSQTATLQQASQQVLASEARRQELEEAEVGVAGLSEMEQQ
IRESRISLEKDIETSELLARLGLDTHQAPAQALNETQWALERLRLQLGSPGSLQRKLSLLEQESQQQE
LQIQGFESDLAEIRADKQNL EAILHSLPEN CASWQ
```

TRTRPLEQKLISEEDLAANDILDYKDDDDKV



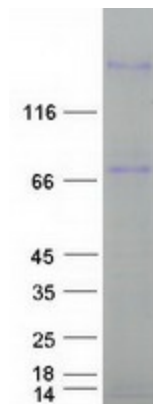
[View online >](#)

Tag:	C-Myc/DDK
Predicted MW:	169.4 kDa
Concentration:	>0.05 µg/µL as determined by microplate BCA method
Purity:	> 80% as determined by SDS-PAGE and Coomassie blue staining
Buffer:	25 mM Tris-HCl, 100 mM glycine, pH 7.3, 10% glycerol
Preparation:	Recombinant protein was captured through anti-DDK affinity column followed by conventional chromatography steps.
Note:	For testing in cell culture applications, please filter before use. Note that you may experience some loss of protein during the filtration process.
Storage:	Store at -80°C.
Stability:	Stable for 12 months from the date of receipt of the product under proper storage and handling conditions. Avoid repeated freeze-thaw cycles.
RefSeq:	NP_006050
Locus ID:	10319
UniProt ID:	Q9Y6N6 , Q8N2D6
RefSeq Size:	5100
Cytogenetics:	9q34.12
RefSeq ORF:	4725
Synonyms:	OCCM

Summary:

Laminins, a family of extracellular matrix glycoproteins, are the major noncollagenous constituent of basement membranes. They have been implicated in a wide variety of biological processes including cell adhesion, differentiation, migration, signaling, neurite outgrowth and metastasis. Laminins are composed of 3 non identical chains: laminin alpha, beta and gamma (formerly A, B1, and B2, respectively) and they form a cruciform structure consisting of 3 short arms, each formed by a different chain, and a long arm composed of all 3 chains. Each laminin chain is a multidomain protein encoded by a distinct gene. Several isoforms of each chain have been described. Different alpha, beta and gamma chain isomers combine to give rise to different heterotrimeric laminin isoforms which are designated by Arabic numerals in the order of their discovery, i.e. alpha1beta1gamma1 heterotrimer is laminin 1. The biological functions of the different chains and trimer molecules are largely unknown, but some of the chains have been shown to differ with respect to their tissue distribution, presumably reflecting diverse functions in vivo. This gene encodes the gamma chain isoform laminin, gamma 3. The gamma 3 chain is most similar to the gamma 1 chain, and contains all the 6 domains expected of the gamma chain. It is a component of laminin 12. The gamma 3 chain is broadly expressed in skin, heart, lung, and the reproductive tracts. In skin, it is seen within the basement membrane of the dermal-epidermal junction at points of nerve penetration. Gamma 3 is also a prominent element of the apical surface of ciliated epithelial cells of lung, oviduct, epididymis, ductus deferens, and seminiferous tubules. The distribution of gamma 3-containing laminins along ciliated epithelial surfaces suggests that the apical laminins are important in the morphogenesis and structural stability of the ciliated processes of these cells. [provided by RefSeq, Aug 2011]

Protein Pathways: ECM-receptor interaction, Focal adhesion, Pathways in cancer, Small cell lung cancer

Product images:

Coomassie blue staining of purified LAMC3 protein (Cat# TP318146). The protein was produced from HEK293T cells transfected with LAMC3 cDNA clone (Cat# [RC218146]) using MegaTran 2.0 (Cat# [TT210002]).