

Product datasheet for **TP318144M**

C1orf172 (KDF1) (NM_152365) Human Recombinant Protein

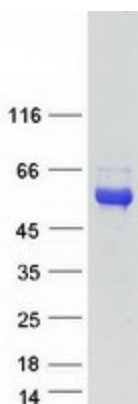
Product data:

Product Type:	Recombinant Proteins
Description:	Recombinant protein of human chromosome 1 open reading frame 172 (C1orf172), 100 µg
Species:	Human
Expression Host:	HEK293T
Expression cDNA Clone or AA Sequence:	>RC218144 representing NM_152365 Red =Cloning site Green =Tags(s) MPRPGHPRPASGPPRLGPWERPTCLCLETYDKPPQPPPSRRTRRPDPKDPGHHGPESITFISGSAEPALE SPTCCLLWRPWVWEWCRAAFCFRRCRDCLQRCGACVRGCSPCLSTEDSTEGTAEANWAKEHNGVPPSP DR APPSRRDGQRLKSTMGSSFSYPDVKLKGIPVYPYPRATSPAPDADSCCKEPLADPPPMRHSLPSTFASSP RGSEYYSFHESDLDPPEMGSGSMSSREIDVLIFKKLTFLFSVHQIDELAKCTSDTVFLEKTSKISDLIS SITQDYHLDEQDAEGLVRGIIRISTRKSRARPQTSEGRSTRAAAPTAAAPDSGHETMVGSGLSQDELTV QISQETTADAIARKLRPYGAGYPASHDSSFQGTDTDSSGAPLLQVYC TRTRPLEQKLISEEDLAANDILDYKDDDDKV
Tag:	C-Myc/DDK
Predicted MW:	43.5 kDa
Concentration:	>0.05 µg/µL as determined by microplate BCA method
Purity:	> 80% as determined by SDS-PAGE and Coomassie blue staining
Buffer:	25 mM Tris-HCl, 100 mM glycine, pH 7.3, 10% glycerol
Preparation:	Recombinant protein was captured through anti-DDK affinity column followed by conventional chromatography steps.
Note:	For testing in cell culture applications, please filter before use. Note that you may experience some loss of protein during the filtration process.
Storage:	Store at -80°C.
Stability:	Stable for 12 months from the date of receipt of the product under proper storage and handling conditions. Avoid repeated freeze-thaw cycles.
RefSeq:	<u>NP_689578</u>


[View online »](#)

Locus ID:	126695
UniProt ID:	<u>Q8NAX2</u>
RefSeq Size:	1785
Cytogenetics:	1p36.11
RefSeq ORF:	1194
Synonyms:	C1orf172; ECTD12
Summary:	Plays a role in the regulation of the epidermis formation during early development. Required both as an inhibitor of basal cell proliferation and a promoter of differentiation of basal progenitor cell progeny (By similarity).[UniProtKB/Swiss-Prot Function]

Product images:



Coomassie blue staining of purified KDF1 protein (Cat# [TP318144]). The protein was produced from HEK293T cells transfected with KDF1 cDNA clone (Cat# [RC218144]) using MegaTran 2.0 (Cat# [TT210002]).