

Product datasheet for TP318144L

C1orf172 (KDF1) (NM_152365) Human Recombinant Protein

Product data:

Product Type: Recombinant Proteins
Description: Recombinant protein of human chromosome 1 open reading frame 172 (C1orf172), 1 mg
Species: Human
Expression Host: HEK293T
Expression cDNA Clone or AA Sequence: >RC218144 representing NM_152365
Red=Cloning site Green=Tags(s)

MPRPGHPRPASGPPRLGPWERPTELCLETYDKPPQPPPSRRTRRPDPKDPGHHGPESITFISGSAEPALE
 SPTCCLLWRPWVWEWCRAAFCFRRCRDCLQRCGACVRGCSPLSTEDSTEGTAEANWAKEHNGVPPSPDR
 APPSRRDGQRLKSTMGSSFSYPDVKLKGIPIVYPYPRATSPAPDADSCCKEPLADPPPMRHSPLSTFASSP
 RGSEYYSFHESDLDPENMGSGSMSSREIDVLIFKKLTELFVHQIDELAKCTSDTVLEKTSKISDLIS
 SITQDYHLDEQDAEGRLVIRISTRKSRARPQTSEGRSTRAAAPDAAAPDSGHETMVGSGLSQDELTV
 QISQETTADAIARKLRPYGAPGYPASHDSSFQGTDTDSSGAPLLQVYC

TRTRPLEQKLISEEDLAANDILDYKDDDDDKV

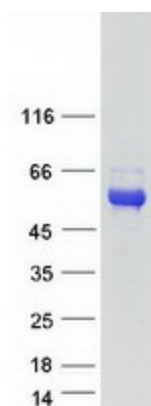
Tag: C-Myc/DDK
Predicted MW: 43.5 kDa
Concentration: >0.05 µg/µL as determined by microplate BCA method
Purity: > 80% as determined by SDS-PAGE and Coomassie blue staining
Buffer: 25 mM Tris-HCl, 100 mM glycine, pH 7.3, 10% glycerol
Preparation: Recombinant protein was captured through anti-DDK affinity column followed by conventional chromatography steps.
Note: For testing in cell culture applications, please filter before use. Note that you may experience some loss of protein during the filtration process.
Storage: Store at -80°C.
Stability: Stable for 12 months from the date of receipt of the product under proper storage and handling conditions. Avoid repeated freeze-thaw cycles.
RefSeq: [NP_689578](#)
Locus ID: 126695



[View online »](#)

UniProt ID:	<u>Q8NAX2</u>
RefSeq Size:	1785
Cytogenetics:	1p36.11
RefSeq ORF:	1194
Synonyms:	C1orf172; ECTD12
Summary:	Plays a role in the regulation of the epidermis formation during early development. Required both as an inhibitor of basal cell proliferation and a promoter of differentiation of basal progenitor cell progeny (By similarity).[UniProtKB/Swiss-Prot Function]

Product images:



Coomassie blue staining of purified KDF1 protein (Cat# [TP318144]). The protein was produced from HEK293T cells transfected with KDF1 cDNA clone (Cat# [RC218144]) using MegaTran 2.0 (Cat# [TT210002]).