

Product datasheet for **TP318129L**

Secretin (SCT) (NM_021920) Human Recombinant Protein

Product data:

Product Type: Recombinant Proteins

Description: Recombinant protein of human secretin (SCT), 1 mg

Species: Human

Expression Host: HEK293T

Expression cDNA Clone or AA Sequence: >RC218129 representing NM_021920
Red=Cloning site **Green**=Tags(s)

MAPRPLLLLLLLLLGGSAARPAPPRARRHSDGTFTELSRLREGARLQRLQLQGLVGRSEQDAENSMAWTR
LSAGLLCPSGSGNMPILQAWMPLDGTWSPWLPPGPMVSEPAGEAAEGTLRPR

TRTRPLEQKLISEEDLAANDILDYKDDDDKV

Tag: C-Myc/DDK

Predicted MW: 12.8 kDa

Concentration: >0.05 µg/µL as determined by microplate BCA method

Purity: > 80% as determined by SDS-PAGE and Coomassie blue staining

Buffer: 25 mM Tris-HCl, 100 mM glycine, pH 7.3, 10% glycerol

Preparation: Recombinant protein was captured through anti-DDK affinity column followed by conventional chromatography steps.

Note: For testing in cell culture applications, please filter before use. Note that you may experience some loss of protein during the filtration process.

Storage: Store at -80°C.

Stability: Stable for 12 months from the date of receipt of the product under proper storage and handling conditions. Avoid repeated freeze-thaw cycles.

RefSeq: [NP_068739](#)

Locus ID: 6343

UniProt ID: [P09683](#)

RefSeq Size: 514

Cytogenetics: 11p15.5



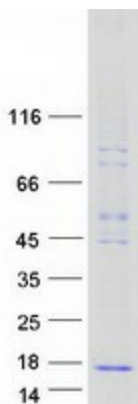
[View online »](#)

RefSeq ORF: 363

Summary: This gene encodes a member of the glucagon family of peptides. The encoded preproprotein is secreted by endocrine S cells in the proximal small intestinal mucosa as a prohormone, then proteolytically processed to generate the mature peptide hormone. The release of this active peptide hormone is stimulated by either fatty acids or acidic pH in the duodenum. This hormone stimulates the secretion of bile and bicarbonate in the duodenum, pancreatic and biliary ducts. [provided by RefSeq, Feb 2016]

Protein Families: Druggable Genome, Secreted Protein

Product images:



Coomassie blue staining of purified SCT protein (Cat# [TP318129]). The protein was produced from HEK293T cells transfected with SCT cDNA clone (Cat# [RC218129]) using MegaTran 2.0 (Cat# [TT210002]).