

## Product datasheet for **TP318129**

### Secretin (SCT) (NM\_021920) Human Recombinant Protein

#### Product data:

**Product Type:** Recombinant Proteins

**Description:** Recombinant protein of human secretin (SCT), 20 µg

**Species:** Human

**Expression Host:** HEK293T

**Expression cDNA Clone or AA Sequence:** >RC218129 representing NM\_021920

**Red**=Cloning site **Green**=Tags(s)

MAPRPLLLLLLLLLGGSAARPAPPRARRHSDGTFSTSELSRLREGARLQRLQLQGLVGRSEQDAENSMAWTR  
LSAGLLCPSGSGNMPILQAWMPLDGTWSPWLPPGPMVSEPAGEAAEGTLRPR

**TRTRPLEQKLISEEDLAANDILDYKDDDDKV**

**Tag:** C-Myc/DDK

**Predicted MW:** 12.8 kDa

**Concentration:** >0.05 µg/µL as determined by microplate BCA method

**Purity:** > 80% as determined by SDS-PAGE and Coomassie blue staining

**Buffer:** 25 mM Tris-HCl, 100 mM glycine, pH 7.3, 10% glycerol

**Preparation:** Recombinant protein was captured through anti-DDK affinity column followed by conventional chromatography steps.

**Note:** For testing in cell culture applications, please filter before use. Note that you may experience some loss of protein during the filtration process.

**Storage:** Store at -80°C.

**Stability:** Stable for 12 months from the date of receipt of the product under proper storage and handling conditions. Avoid repeated freeze-thaw cycles.

**RefSeq:** [NP\\_068739](#)

**Locus ID:** 6343

**UniProt ID:** [P09683](#)

**RefSeq Size:** 514

**Cytogenetics:** 11p15.5



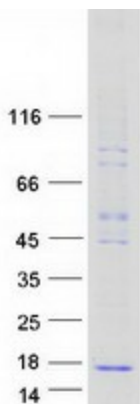
[View online »](#)

RefSeq ORF: 363

**Summary:** This gene encodes a member of the glucagon family of peptides. The encoded preproprotein is secreted by endocrine S cells in the proximal small intestinal mucosa as a prohormone, then proteolytically processed to generate the mature peptide hormone. The release of this active peptide hormone is stimulated by either fatty acids or acidic pH in the duodenum. This hormone stimulates the secretion of bile and bicarbonate in the duodenum, pancreatic and biliary ducts. [provided by RefSeq, Feb 2016]

**Protein Families:** Druggable Genome, Secreted Protein

### Product images:



Coomassie blue staining of purified SCT protein (Cat# TP318129). The protein was produced from HEK293T cells transfected with SCT cDNA clone (Cat# [RC218129]) using MegaTran 2.0 (Cat# [TT210002]).