

Product datasheet for **TP318098L**

myosin heavy chain 3 (MYH3) (NM_002470) Human Recombinant Protein

Product data:

Product Type:	Recombinant Proteins
Description:	Recombinant protein of human myosin, heavy chain 3, skeletal muscle, embryonic (MYH3), 1 mg
Species:	Human
Expression Host:	HEK293T



[View online »](#)

Expression cDNA Clone >RC218098 representing NM_002470
 or AA Sequence: **Red**=Cloning site **Green**=Tags(s)

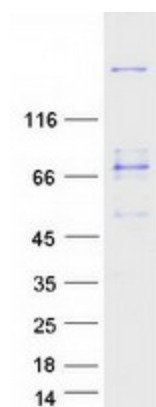
MSSDTEMEVFGIAAPFLRKSEKERIEAQNQPFDKTYCFVDSKEEYAKGKIKSSQDGKVTVETEDNRTL
 VVKPEDVYAMNPPKFDRIEDMAMALTHLNEPAVLYNLKDRYTSWMIYTYSGLFCVTVPYKWLVPVYNEPV
 EGYRGKKRQEAPPHIFSISDNAYQFMLTDRENQSILITGESGAGKTVNTRKVIQYFATIAATGDLAKKKD
 SKMKGTLLEDQIISANPLLEAFGNAKTVRNDNSSRFGKFIHFGTTGKLASADIETYLLEKSRVTFQLKA
 ERSYHIFYQILSNKKPELIELLLITNPPYDYPFISQGEILVASIDDAEELLATDSAIDILGFTPEEKSLG
 YKLTGAVMHYGNMFKQKQREEQAEPDGTVEADKTAYLMGLNSSDLLKALCFPRVKVGVNEYVTKGQTVDQ
 VHHAVNALSKSVYEKLFVWVTRINQQLDTKLPRQHFVGLDIAGFEIFEYNSLEQLCINFTNEKLQQFF
 NHHMFVLEQEYKKEGIEWTFIDFGMDLAACIELIEKPMGIFSILEEECMFPKATDTSFKNKLYDQHLGK
 SNNFQKPKVVKGRAEAHFSLIHYAGTVDSVSGWLEKNKDPLNETVVGLYQKSSNRLLAHLYATFATADA
 DSGKKKVAKKKGSSSQTVSALFRENLNKLSNLRTHPHFVRCIIPNETKTPGAMEHSLVLHQLRCNGVL
 EGIRICRKGFPNRILYGDFKQRYRVLNASAIPEGQFIDSKKACEKLLASIDIDHTQYKFGHTKVFFKAGL
 LGTLEEMRDDRLAKLITRTQAVCRGFLMRVEFQKMQVQRRESIFCIQYNIIRSFMNKHWPMKLVFFKIKPL
 LKSAETEKEMATMKEEFQKTKDELAKSEAKRKELEEKLVTLVQEKNDLQLQVQAESENLLDAEERCDQLI
 KAKFQLEAKIKEVTERAEDEEEINAELTAKKRKLEDECESELKKDIDDLELTLAKVEKEKHATENKVKNLT
 EELSGLDETIAKLTREKKALQEAHQALDDLQAEEDKVNSLNKTKSKLEQQVEDLESSLEQEKKLRVDLE
 RNKRKLEGLDLKLAQESILDLENDKQQLDERLKKKDFEYQQLQSKVEDEQTLGLQFQKKIKELQARIEELE
 EEIEAERATRAKTEKQRSYARELEELSERLEEAGGVSTSTQIELNKKREAFLKLRDLEEATLQHEAMV
 AALRKKHADSVAEELGEQIDNLQRVKQKLEKEKSEFKLEIDDLSSSMESVSKSKANLEKICRTLEDQLSEA
 RGKNEEIQRSLSELTTQKSRLQTEAGELSRQLEEKESIVSLSRSKQAFQTEELKRQLEENKAKNAL
 AHALQSSRHDCDLLREQYEEEQEGKAELQRALSKANSEVAQWRTKYETDAIQRTEEEAKKKLAQRLQD
 SEEQVEAVNAKASLEKTKQRLQGEVEDLMVDVERANSLAAALDKKQRNFDKVLAEWTKCEESQAELEA
 SLKESRSLSTELFKLNAYEEALDQLETVKRENKLEQEIADLTEQIAENGKTIHELEKSRKQIELEKAD
 IQLALEEAEAALEHEEAKILRIQLELTQVKSEIDRKIAEKDEEIEQLKRNRYQRTVETMQSALDAEVRSN
 EAIRLKKKMEGDLNEIEIQLSHANRQAAETLKHLSVQGGQLKDTQLHLDDALRGQEDLKEQLAIVERRAN
 LLQAEVEELRATLEQTERARKLAEQELLDNERVQLLHTQNTSLIHTKKKLETDLMQLQSEVEDASRDAR
 NAEKAKKAITDAAMMAEELKKEQDTSALHERMKNLEQTVKDLQHRLDEAEQLALKGGKKQIQKLETRI
 RELEFELEGEQKKNTESVKGLRKYERRVKELTYQSEEDRKNVLRQLDLDVLDKLVKVKSYKRQAEAEDEQA
 NAHLTKFRKAQHELEEAERADIAESQVNKLRAKTRDFTSSRMVVHESEE

TRTRPLEQKLISEEDLAANDILDYKDDDDKV

Tag: C-Myc/DDK
Predicted MW: 223.7 kDa
Concentration: >0.05 µg/µL as determined by microplate BCA method
Purity: > 80% as determined by SDS-PAGE and Coomassie blue staining
Buffer: 25 mM Tris-HCl, 100 mM glycine, pH 7.3, 10% glycerol
Preparation: Recombinant protein was captured through anti-DDK affinity column followed by conventional chromatography steps.

Note:	For testing in cell culture applications, please filter before use. Note that you may experience some loss of protein during the filtration process.
Storage:	Store at -80°C.
Stability:	Stable for 12 months from the date of receipt of the product under proper storage and handling conditions. Avoid repeated freeze-thaw cycles.
RefSeq:	NP_002461
Locus ID:	4621
UniProt ID:	P11055 , Q5GI67
RefSeq Size:	6061
Cytogenetics:	17p13.1
RefSeq ORF:	5820
Synonyms:	CPSFS1A; CPSFS1B; CPSKF1A; CPSKF1B; DA2A; DA2B; DA2B3; DA8; HEMHC; MYHC-EMB; MYHSE1; SMHCE
Summary:	Myosin is a major contractile protein which converts chemical energy into mechanical energy through the hydrolysis of ATP. Myosin is a hexameric protein composed of a pair of myosin heavy chains (MYH) and two pairs of nonidentical light chains. This gene is a member of the MYH family and encodes a protein with an IQ domain and a myosin head-like domain. Mutations in this gene have been associated with two congenital contracture (arthrogryposis) syndromes, Freeman-Sheldon syndrome and Sheldon-Hall syndrome. [provided by RefSeq, Jul 2008]
Protein Pathways:	Tight junction, Viral myocarditis

Product images:



Coomassie blue staining of purified MYH3 protein (Cat# [TP318098]). The protein was produced from HEK293T cells transfected with MYH3 cDNA clone (Cat# [RC218098]) using MegaTran 2.0 (Cat# [TT210002]).