

Product datasheet for **TP318090M**

ASPG (NM_001080464) Human Recombinant Protein

Product data:

Product Type:	Recombinant Proteins
Description:	Recombinant protein of human asparaginase homolog (<i>S. cerevisiae</i>) (ASPG), 100 µg
Species:	Human
Expression Host:	HEK293T
Expression cDNA Clone or AA Sequence:	>RC218090 representing NM_001080464 Red =Cloning site Green =Tags(s)

MARAVGPERRLLAVYTTGGTIGMRSELGVLVPGTGLAAILRTLPMFHDEEHARARGLSEDTLVLPPASRNQ
RILYTVLEQCPLFDSSDMTIAEWVCLAQTIKRHYEQYHGFVVIHGTDTMAFAASMLSFMLENLQKTVILT
GAQVPIHALWSDGRENLLGALLMAGQYVIPEVCLFFQNQLFRGNRATKVDARRFAAFCSPELLPLATVGA
DITINRELVRKVDGKAGLVVHSSMEQDVGLLRLYPGIPAALVRAFLQPPLKGVVMTFGSGNGPTKPDLL
QELRVATERGLVIVNCTHCLQGAVTTDYAAGMAMAGAGVISGFDMTSEALAKLSYVLGQPGLSLDVRKE
LLTKDLRGEMTPPSVEERRPSLQGNTLGGGVSWLLSLSGSQEADALRNALVPSLACAAAHAGDVEALQAL
VELGSDLGLVDFNGQTPLHAAARGGHTEAVTMLLQRGVDVNTTRDTGDFSPLLAVRGRHPGVIGLLREAG
ASLSTQELEEAGTELCRLAYRADLEGLQVWWQAGADLGQPGYDGHSAHVAAAGNLAVVAFLQSLEGAV
GAQAPCEPSCFQEVLPGV

TRTRPLEQKLISEEDLAANDILDYKDDDDKV

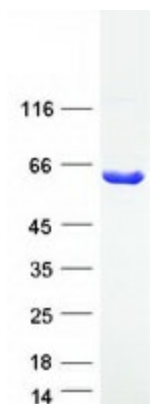
Tag:	C-Myc/DDK
Predicted MW:	61.4 kDa
Concentration:	>0.05 µg/µL as determined by microplate BCA method
Purity:	> 80% as determined by SDS-PAGE and Coomassie blue staining
Buffer:	25 mM Tris-HCl, 100 mM glycine, pH 7.3, 10% glycerol
Preparation:	Recombinant protein was captured through anti-DDK affinity column followed by conventional chromatography steps.
Note:	For testing in cell culture applications, please filter before use. Note that you may experience some loss of protein during the filtration process.
Storage:	Store at -80°C.



[View online »](#)

Stability:	Stable for 12 months from the date of receipt of the product under proper storage and handling conditions. Avoid repeated freeze-thaw cycles.
RefSeq:	NP_001073933
Locus ID:	374569
UniProt ID:	Q86U10
RefSeq Size:	1844
Cytogenetics:	14q32.33
RefSeq ORF:	1737
Synonyms:	C14orf76; GPA/WT; LYSOLP
Summary:	Exhibits lysophospholipase, transacylase, PAF acetylhydrolase and asparaginase activities. [UniProtKB/Swiss-Prot Function]

Product images:



Coomassie blue staining of purified ASPG protein (Cat# [TP318090]). The protein was produced from HEK293T cells transfected with ASPG cDNA clone (Cat# [RC218090]) using MegaTran 2.0 (Cat# [TT210002]).