

Product datasheet for **TP318053M**

SHE (NM_001010846) Human Recombinant Protein

Product data:

Product Type: Recombinant Proteins
Description: Recombinant protein of human Src homology 2 domain containing E (SHE), 100 µg
Species: Human
Expression Host: HEK293T
Expression cDNA Clone or AA Sequence: >RC218053 protein sequence
Red=Cloning site **Green**=Tags(s)

MQWSPTPGASACLGWASSLACSTAPTLGRAGRGLMAAKWFKFPLNLKTVSERAKPGGGGGKLRKNS
AGGAGPGPGKGRKNSAAELGSGRAGVGPKDSRLSRDSLQGLIQAAAGKGRKNSRATEEPPHRGATKSSGC
STYINRLIKVDTQEKNKSNYPSSSSSSSSSSSSASSPSSLGPELDKGKIIKQQTVIILEDYADPYDA
KRTKGQRDAERVGENDGYMEPYDAQMITEIRRRGSKDPLVKALQLLDSPCEPADGGLKSETLAKRRSSK
DLLGKPPQLYDTPYEPAEGGPRAEGKARPPDSRLPENDERPAAEYEQPWEWKKEQIVRALSQVFEAERP
SFREETVRQHHRQKSWTQKILKPALSDHSEGEKVPGLPLEKQPWYHGAISSRAEASRLQPCKEAGYLVR
NSEGNSRYSIALKTSQGCVHIIVAQTKDNKYTLNQTSAVFDSIPEVVHYSNEKLPFKGAEHMTLLYPV
HSLH

TRTRPLEQKLISEEDLAANDILDYKDDDDKV

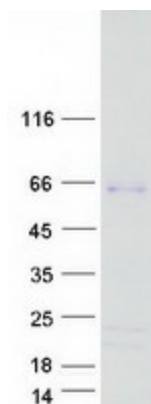
Tag: C-Myc/DDK
Predicted MW: 53.8 kDa
Concentration: >0.05 µg/µL as determined by microplate BCA method
Purity: > 80% as determined by SDS-PAGE and Coomassie blue staining
Buffer: 25 mM Tris-HCl, 100 mM glycine, pH 7.3, 10% glycerol
Preparation: Recombinant protein was captured through anti-DDK affinity column followed by conventional chromatography steps.
Note: For testing in cell culture applications, please filter before use. Note that you may experience some loss of protein during the filtration process.
Storage: Store at -80°C.
Stability: Stable for 12 months from the date of receipt of the product under proper storage and handling conditions. Avoid repeated freeze-thaw cycles.



[View online »](#)

RefSeq: [NP_001010846](#)
Locus ID: 126669
UniProt ID: [Q5VZ18](#)
RefSeq Size: 6186
Cytogenetics: 1q21.3
RefSeq ORF: 1485

Product images:



Coomassie blue staining of purified SHE protein (Cat# [TP318053]). The protein was produced from HEK293T cells transfected with SHE cDNA clone (Cat# [RC218053]) using MegaTran 2.0 (Cat# [TT210002]).