

## Product datasheet for **TP318053**

### **SHE (NM\_001010846) Human Recombinant Protein**

#### **Product data:**

**Product Type:** Recombinant Proteins

**Description:** Recombinant protein of human Src homology 2 domain containing E (SHE), 20 µg

**Species:** Human

**Expression Host:** HEK293T

**Expression cDNA Clone or AA Sequence:** >RC218053 protein sequence  
**Red**=Cloning site **Green**=Tags(s)

MQWSPTPGASACLGWASSLACSTAPTLLGRAGRPLMAAKWFKEFPLNLKTVSERAKPGGGGGKLRKNS  
E  
AGGAGPGPGKGRKNSAAELGSGRAGVGPKDSRLSRDSLQGLIQAAAGKGRKNSRATEEEPHRGATKSSGC  
STYINRLIKVDTQEKNGKSNYPSSSSSSSSSSSSASSPSSLGPELDKGKIIKQETVILEDYADPYDA  
KRTKGQRDAERVGENDGYMEPYDAQQMITEIRRRGSKDPLVKALQLLDSPCEPADGGLKSETLAKRRSSK  
DLLGKPPQLYDTPYEPAEGGPRAEGKARPPDSRLPENDERPAAEYEQPWEWKKEQIVRALSVQFEGAERP  
SFREETVRQHHRQKSWTQKILKPALSDHSEGEKVDPGLPLEKQPWYHGAISRAEAESRLQPCKEAGYLVR  
NSESNGNSRYIALKTSQGCVHIIAQTCDNKYTLNQTSVAFDSIPEVWHYYSNEKLFPKGAEHMTLLYPV  
HSLKH

**TRTRPLEQKLISEEDLAANDILDYKDDDDKV**

**Tag:** C-Myc/DDK

**Predicted MW:** 53.8 kDa

**Concentration:** >0.05 µg/µL as determined by microplate BCA method

**Purity:** > 80% as determined by SDS-PAGE and Coomassie blue staining

**Buffer:** 25 mM Tris-HCl, 100 mM glycine, pH 7.3, 10% glycerol

**Preparation:** Recombinant protein was captured through anti-DDK affinity column followed by conventional chromatography steps.

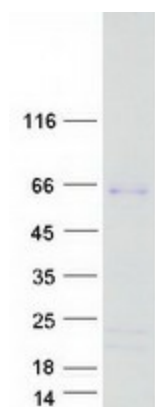
**Note:** For testing in cell culture applications, please filter before use. Note that you may experience some loss of protein during the filtration process.

**Storage:** Store at -80°C.



[View online »](#)

<b>Stability:</b>	Stable for 12 months from the date of receipt of the product under proper storage and handling conditions. Avoid repeated freeze-thaw cycles.
<b>RefSeq:</b>	<u>NP_001010846</u>
<b>Locus ID:</b>	126669
<b>UniProt ID:</b>	<u>Q5VZ18</u>
<b>RefSeq Size:</b>	6186
<b>Cytogenetics:</b>	1q21.3
<b>RefSeq ORF:</b>	1485

**Product images:**


Coomassie blue staining of purified SHE protein (Cat# TP318053). The protein was produced from HEK293T cells transfected with SHE cDNA clone (Cat# [RC218053]) using MegaTran 2.0 (Cat# [TT210002]).