

Product datasheet for **TP318048L**

LBX1 (NM_006562) Human Recombinant Protein

Product data:

Product Type:	Recombinant Proteins
Description:	Recombinant protein of human ladybird homeobox 1 (LBX1), 1 mg
Species:	Human
Expression Host:	HEK293T
Expression cDNA Clone or AA Sequence:	>RC218048 representing NM_006562 Red =Cloning site Green =Tags(s)
	<p>MTSKEDGKAAPGEERRRSPLDHLPPPANSNKPLTPFSIEDILNKPSVRRSYSLCGAAHLLAAADKHAQGG LPLAGRALLSQTSPLEELASKTFKGLEVSVLQAAEGRDGMTIFGQRQTPKKRRKSRTAFTNHQIYEL EKRFYQKYLSPADRDQIAQQLGLTNAQVITWFQNRRAKLRDLEEMKADVESAKKLGPSGQMDIVALAE LEQNSEATAGGGGGCGRAKSRPGSPVLPAGAPKAPGAGALQLSPASPLTDQPASSQDCSEDEEEDVD D</p> <p>TRTRPLEQKLISEEDLAANDILDYKDDDDKV</p>
Tag:	C-Myc/DDK
Predicted MW:	30 kDa
Concentration:	>0.05 µg/µL as determined by microplate BCA method
Purity:	> 80% as determined by SDS-PAGE and Coomassie blue staining
Buffer:	25 mM Tris-HCl, 100 mM glycine, pH 7.3, 10% glycerol
Preparation:	Recombinant protein was captured through anti-DDK affinity column followed by conventional chromatography steps.
Note:	For testing in cell culture applications, please filter before use. Note that you may experience some loss of protein during the filtration process.
Storage:	Store at -80°C.
Stability:	Stable for 12 months from the date of receipt of the product under proper storage and handling conditions. Avoid repeated freeze-thaw cycles.
RefSeq:	<u>NP_006553</u>
Locus ID:	10660



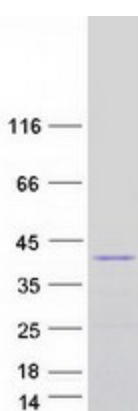
[View online »](#)

UniProt ID: [P52954](#)
RefSeq Size: 1287
Cytogenetics: 10q24.32
RefSeq ORF: 843
Synonyms: homeobox; HPX-6; HPX6; LBX1H

Summary: This gene and the orthologous mouse gene were found by their homology to the Drosophila lady bird early and late homeobox genes. In the mouse, this gene is a key regulator of muscle precursor cell migration and is required for the acquisition of dorsal identities of forelimb muscles. [provided by RefSeq, Jul 2008]

Protein Families: Transcription Factors

Product images:



Coomassie blue staining of purified LBX1 protein (Cat# [TP318048]). The protein was produced from HEK293T cells transfected with LBX1 cDNA clone (Cat# [RC218048]) using MegaTran 2.0 (Cat# [TT210002]).