

## Product datasheet for **TP318042**

### CLIC1 (NM\_001288) Human Recombinant Protein

#### Product data:

Product Type:	Recombinant Proteins
Description:	Recombinant protein of human chloride intracellular channel 1 (CLIC1), 20 µg
Species:	Human
Expression Host:	HEK293T
Expression cDNA Clone or AA Sequence:	>RC218042 representing NM_001288 <b>Red</b> =Cloning site <b>Green</b> =Tags(s)
	 MAEEQPQVELFVKAGSDGAKIGNCPFSQRLFMVLWLKGVTFNVTTVDTKRRTETVQKLCPPGGQLPFLLYG TEVHTDTNKIEEFLEAVLCPPRYPKLAALNPESNTAGLDIFAKFSAYIKNSNPALNDNLEKGLLKALKVL DNYLTSPLPEEVDETSAEDEGVSQRKFLDGNELTLADCNLLPKLHIVQVCKKYRGFTIPEAFRGVHRYL SNAYAREEFASCPDDEEIELAYEQVAKALK  <b>TRTRPLEQKLISEEDLAANDILDYKDDDDKV</b>
Tag:	C-Myc/DDK
Predicted MW:	26.7 kDa
Concentration:	>0.05 µg/µL as determined by microplate BCA method
Purity:	> 80% as determined by SDS-PAGE and Coomassie blue staining
Buffer:	25 mM Tris-HCl, 100 mM glycine, pH 7.3, 10% glycerol
Preparation:	Recombinant protein was captured through anti-DDK affinity column followed by conventional chromatography steps.
Note:	For testing in cell culture applications, please filter before use. Note that you may experience some loss of protein during the filtration process.
Storage:	Store at -80°C.
Stability:	Stable for 12 months from the date of receipt of the product under proper storage and handling conditions. Avoid repeated freeze-thaw cycles.
RefSeq:	<u><a href="#">NP_001279</a></u>
Locus ID:	1192
UniProt ID:	<u><a href="#">O00299</a></u>



[View online »](#)

RefSeq Size: 1265

Cytogenetics: 6p21.33

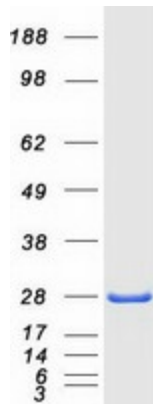
RefSeq ORF: 723

Synonyms: CL1C1; CLCNL1; G6; NCC27

**Summary:** Chloride channels are a diverse group of proteins that regulate fundamental cellular processes including stabilization of cell membrane potential, transepithelial transport, maintenance of intracellular pH, and regulation of cell volume. Chloride intracellular channel 1 is a member of the p64 family; the protein localizes principally to the cell nucleus and exhibits both nuclear and plasma membrane chloride ion channel activity. [provided by RefSeq, Jul 2008]

**Protein Families:** Druggable Genome, Ion Channels: Other

### Product images:



Coomassie blue staining of purified CLIC1 protein (Cat# TP318042). The protein was produced from HEK293T cells transfected with CLIC1 cDNA clone (Cat# [RC218042]) using MegaTran 2.0 (Cat# [TT210002]).