

Product datasheet for TP318038M

KIF16B (NM_024704) Human Recombinant Protein

Product data:

Product Type:	Recombinant Proteins
Description:	Recombinant protein of human kinesin family member 16B (KIF16B), 100 µg
Species:	Human
Expression Host:	HEK293T
Expression cDNA Clone or AA Sequence:	>RC218038 representing NM_024704 Red=Cloning site Green=Tags(s)

MASVKVAVRVRPMNRREKDLEAKFIIQMEKSKTTITNLKIPEGGTGDSGRERTKTFTYDFSFYSADTKSP
DYVSQEMVFKTLGTDVWKSFAFEGYNACVFAYGQTGSGKSYTMMGNSSGDSGLIPRICEGLFSRINETTRWD
EASFRTEVSYLEIYNERNRDLRRKSSKTFNLRVREHPKEGPPYVEDLSKHLVQNYGDVEELMDAGNINRT
TAATGMNDVSSRSHAFITIKFTQAKFDSEMP CETVSKIHLVDLAGSERADATGATGVRLKEGGNINKSLV
TLGNVISALADLSQDAANTLAKKKQVFPYRDSVLTWLLKDSLGGNSKTIMIATISPADVNYGETLSTLR
YANRAKNIINKPTINEDANVKLIRELRAEIARLKTLLAQGNQIALLDSPALSMEEKLQQNEARVQELTK
EWTNKWNETQNILKEQTLALRKEGIGVLDSELPHLIGIDDDLLSTGIILYHLKEGQTYVGRDDASTEQD
IVLHGLDLESEHCIFENIGGTVTLIPLSGSQCSVNGVQIVEATHLNQGA VILLGRTNMFRFNHPKEAAKL
REKRKSGLLSSFSLSMTDLSKSRNLSAVMLYNPGLFERQQREELEKLESKRKLIEEMEEKQKSDKAEL
ERMQQEVETQRKETEIVQLQIRKQEEESLRRSFHIENKLDLLAEKEKFEERLREQQEIELQKKRQEEE
TFLRVQEELQRLKELNNNEKAQKQIFQELDQLQKEKDEQYAKLELEKKRLEEKEQVMLVAHLEEQLR
EKQEMIQLRRGEVQWVEEEKRDLEGIRESLLRVKEARAGGDEDGEELEKAQLRFFEFKRRQLVKLVNLE
KDLVQQKDILKKEVQEEQEILECLKCEHDKESRLLKHDVSDVTEVPQDFEKIKPVEYRLQYKERQLQ
YLLQNHLP TLL EEKQRAFEILDRGPLSLDNTLYQVEKEMEEKEEQLAQYQANANQLQKLQATFEFTANIA
RQEEKVRKKEKEILESREKQQREALERALARLERRHSALQRHSTLGMEIEEQRQKLASLNSGSRREQSLQ
ASLEAEQEALEKDQERLEYEQQLKQKIYEV DGVQKDHHGTLEGKVASSSLPVSAEKSHLVLMDARINA
YIEEEVQRRLQDLHRVISEGCSTSADTMKDNEKLHNGTIQRKLYERMVSRSLGANPDDLKDPKISIPR
YVLCGQGKDAHFEFEVKITVLD ETWTVFRRYSRFREM HKTLLKLYAELAALEFPK KLFGNKDERVIAER
RSHLEKYLRDFFSVMLQSATSPLHINKVGLTLSKHTICEFSPFFKKG VFDYSSHG TG

TRTRPLEQKLISEEDLAANDILDYKDDDDKV

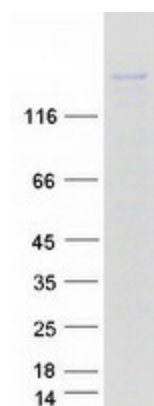
Tag:	C-Myc/DDK
Predicted MW:	151.8 kDa
Concentration:	>0.05 µg/µL as determined by microplate BCA method



[View online »](#)

Purity:	> 80% as determined by SDS-PAGE and Coomassie blue staining
Buffer:	25 mM Tris-HCl, 100 mM glycine, pH 7.3, 10% glycerol
Preparation:	Recombinant protein was captured through anti-DDK affinity column followed by conventional chromatography steps.
Note:	For testing in cell culture applications, please filter before use. Note that you may experience some loss of protein during the filtration process.
Storage:	Store at -80°C.
Stability:	Stable for 12 months from the date of receipt of the product under proper storage and handling conditions. Avoid repeated freeze-thaw cycles.
RefSeq:	NP_078980
Locus ID:	55614
UniProt ID:	Q96L93 , A0A140VK74
RefSeq Size:	5268
Cytogenetics:	20p12.1
RefSeq ORF:	3951
Synonyms:	C20orf23; KISC20ORF; SNX23
Summary:	The protein encoded by this gene is a kinesin-like protein that may be involved in intracellular trafficking. Three transcript variants encoding different isoforms have been found for this gene. [provided by RefSeq, Dec 2010]
Protein Families:	Druggable Genome

Product images:



Coomassie blue staining of purified KIF16B protein (Cat# [TP318038]). The protein was produced from HEK293T cells transfected with KIF16B cDNA clone (Cat# [RC218038]) using MegaTran 2.0 (Cat# [TT210002]).