

## Product datasheet for TP318038L

### KIF16B (NM\_024704) Human Recombinant Protein

#### Product data:

**Product Type:** Recombinant Proteins  
**Description:** Recombinant protein of human kinesin family member 16B (KIF16B), 1 mg  
**Species:** Human  
**Expression Host:** HEK293T  
**Expression cDNA Clone or AA Sequence:** >RC218038 representing NM\_024704  
Red=Cloning site Green=Tags(s)

MASVKVAVRVRPMNRREKDLEAKFIIQMEKSKTTITNLKIPEGGTGDSGRERTKTFTYDFSFYSADTKSP  
 DYVSQEMVFKTLGTDVWKSFAFEGYNACVFAYGQTGSGKSYTMMGNSSGDSGLIPRICEGLFSRINETTRWD  
 EASFRTEVSYLEIYNERNRDLRRKSSKTFNLRVREHPKEGPPYVEDLSKHLVQNYGDVEELMDAGNINRT  
 TAATGMNDVSSRSHAFITKFTQAKFDSEMP CETVSKIHLVDLAGSERADATGATGVRLKEGGNINKSLV  
 TLGNVISALADLSQDAANTLAKKKQVFPYRDSVLTWLLKDSLGGNSKTIAMIATISPADVNYGETLSTLR  
 YANRAKNIINKPTINEDANVKLIRELRAEIARLKTLLAQGNQIALLDSPALSMEEKLQQNEARVQELTK  
 EWTNKWNETQNILKEQTLALRKEGIGVLDSELPHLIGIDDDLLSTGIILYHLKEGQTYVGRDDASTEQD  
 IVLHGLDLESEHCIFENIGGTVTLIPLSGSQCSVNGVQIVEATHLNQGAVILLGRTNMFRFNHPKEAAKL  
 REKRKSGLLSSFSLSMTDLSKSRNLSAVMLYNPGLFERQQREELEKLESKRKLIEEMEEKQKSDKAEL  
 ERMQQEVETQRKETEIVQLQIRKQEEESLRRSFHIENKLDLLAEKEKFEERLREQQEIELQKKRQEEE  
 TFLRVQEELQRLKELNNNEKAQKQIFQELDQLQKEKDEQYAKLELEKKRLEEKEQVMLVAHLEEQLR  
 EKQEMIQLRRGEVQWVEEEKRDLEGIRESLLRVKEARAGGDEDGEELEKAQLRFFEFKRRQLVKLVNLE  
 KDLVQQKDILKKEVQEEQEILECLKCEHDKESRLLKHDVSDVTEVPQDFEKIKPVEYRLQYKERQLQ  
 YLLQNHLP TLL EEKQRAFEILDRGPLSLDNTLYQVEKEMEEKEEQLAQYQANANQLQKLQATFEFTANIA  
 RQEEKVRKKEKEILESREKQQREALERALARLERRHSALQRHSTLGMEIEEQRQKLASLNSGSREQSGLQ  
 ASLEAEQEALEKDQERLEYEQQLKQKIYEV DGVQKDHHGTLEGKVASSSLPVSAEKSHLVLMDARINA  
 YIEEEVQRRQLDLHRVISEGCSTSADTMKDNEKLHNGTIQRKLYERMVSRSLGANPDDLKDPKISIPR  
 YVLCGQGGKDAHFEFEVKITVLD ETWTVFRRYSRFREM HKTLKLYAELAALEFPK KLFGNKDERVIAER  
 RSHLEKYLRDFFSVMLQSATSPLHINKVGLTLSKHTICEFSPFFKKG VFDYSSHGTG

TRTRPLEQKLISEEDLAANDILDYKDDDDKV

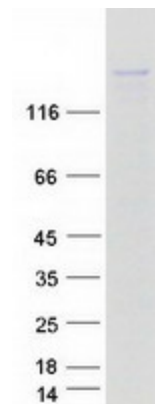
**Tag:** C-Myc/DDK  
**Predicted MW:** 151.8 kDa  
**Concentration:** >0.05 µg/µL as determined by microplate BCA method



[View online »](#)

<b>Purity:</b>	> 80% as determined by SDS-PAGE and Coomassie blue staining
<b>Buffer:</b>	25 mM Tris-HCl, 100 mM glycine, pH 7.3, 10% glycerol
<b>Preparation:</b>	Recombinant protein was captured through anti-DDK affinity column followed by conventional chromatography steps.
<b>Note:</b>	For testing in cell culture applications, please filter before use. Note that you may experience some loss of protein during the filtration process.
<b>Storage:</b>	Store at -80°C.
<b>Stability:</b>	Stable for 12 months from the date of receipt of the product under proper storage and handling conditions. Avoid repeated freeze-thaw cycles.
<b>RefSeq:</b>	<a href="#">NP_078980</a>
<b>Locus ID:</b>	55614
<b>UniProt ID:</b>	<a href="#">Q96L93</a> , <a href="#">A0A140VK74</a>
<b>RefSeq Size:</b>	5268
<b>Cytogenetics:</b>	20p12.1
<b>RefSeq ORF:</b>	3951
<b>Synonyms:</b>	C20orf23; KISC20ORF; SNX23
<b>Summary:</b>	The protein encoded by this gene is a kinesin-like protein that may be involved in intracellular trafficking. Three transcript variants encoding different isoforms have been found for this gene. [provided by RefSeq, Dec 2010]
<b>Protein Families:</b>	Druggable Genome

### Product images:



Coomassie blue staining of purified KIF16B protein (Cat# [TP318038]). The protein was produced from HEK293T cells transfected with KIF16B cDNA clone (Cat# [RC218038]) using MegaTran 2.0 (Cat# [TT210002]).