

Product datasheet for TP318038

KIF16B (NM_024704) Human Recombinant Protein

Product data:

| | |
|---------------------------------------|--|
| Product Type: | Recombinant Proteins |
| Description: | Recombinant protein of human kinesin family member 16B (KIF16B), 20 µg |
| Species: | Human |
| Expression Host: | HEK293T |
| Expression cDNA Clone or AA Sequence: | >RC218038 representing NM_024704 Red=Cloning site Green=Tags(s) |

MASVKVAVRVRPMNRREKDLEAKFIIQMEKSKTTITNLKIPEGGTGDSGRERTKTFTYDFSFYSADTKSP
DYVSQEMVFKTLGTDVWKSFAFEGYNACVFAYGQTGSGKSYTMMGNSGDSGLIPRICEGLFSRINETTRWD
EASFRTEVSYLEIYNERNRDLRRKSSKTFNLRVREHPKEGPPYVEDLSKHLVQNYGDVEELMDAGNINRT
TAATGMNDVSSRSHAFITIKFTQAKFDSEMP CETVSKIHLVDLAGSERADATGATGVRLKEGGNINKSLV
TLGNVISALADLSQDAANTLAKKKQVFPYRDSVLTWLLKDSLGGNSKTIMIATISPADVNYGETLSTLR
YANRAKNIINKPTINEDANVKLIRELRAEIARLKTLLAQGNQIALLDSP TALSMEEKLQQNEARVQELTK
EWTNKWNETQNILKEQTLALRKEGIGVLDSELPHLIGIDDDLLSTGIILYHLKEGQTYVGRDDASTEQD
IVLHGLDLESEHCIFENIGGTVTLIPLSGSQCSVNGVQIVEATHLNQGAVILLGRTNMFRFNHPKEAAKL
REKRKSGLLSSFSLSMTDLSKSRNLSAVMLYNPGLFERQQREELEKLESKRKLIEEMEEKQKSDKAEL
ERMQQEVETQRKETEIVQLQIRKQEEESLRRSFHIENKLDLLAEKEKFEERLREQQEIELQKKRQEEE
TFLRVQEELQRLKELNNNEKAQKQIFQELDQLQKEKDEQYAKLELEKKRLEEKEQVMLVAHLEEQLR
EKQEMIQLRRGEVQWVEEERDLEGIRESLLRVKEARAGGDEDGEELEKAQLRFFEFKRRQLVKLVNLE
KDLVQQKDILKKEVQEEQEILECLKCEHDKESRLLKHDVSDVTEVPQDFEKIKPVEYRLQYKERQLQ
YLLQNHLP TLL EEKQRAFEILDRGPLSLDNTLYQVEKEMEEKEEQLAQYQANANQLQKLQATFEFTANIA
RQEEKVRKKEKEILESREKQQREALERALARLERRHSALQRHSTLGMEIEEQRQKLASLNSGSRREQSGLQ
ASLEAEQEALEKDQERLEYEQQLKQKIYVDGVQKDHHGTLEGKVASSSLPVSAEKSHLVLMDARINA
YIEEEVQRRQLDLHRVISEGCSTSA DTMKDNEKLHNGTIQRKLYERMVSRSLGANPDDLKDPKISIPR
YVLCGQGGKDAHFEFEVKITVLD ETWTVFRRYSRFREM HKTLLKLYAELAALEFP PPKLFGNKDERVIAER
RSHLEKYLRDFFSVMLQSATSPLHINKVGLTLSKHTICEFSPFFKKG VFDYSSHGTG

TRTRPLEQKLISEEDLAANDILDYKDDDDKV

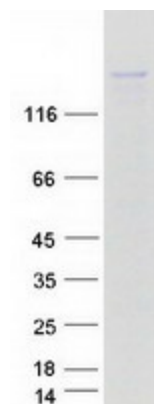
| | |
|----------------|--|
| Tag: | C-Myc/DDK |
| Predicted MW: | 151.8 kDa |
| Concentration: | >0.05 µg/µL as determined by microplate BCA method |



[View online »](#)

| | |
|--------------------------|---|
| Purity: | > 80% as determined by SDS-PAGE and Coomassie blue staining |
| Buffer: | 25 mM Tris-HCl, 100 mM glycine, pH 7.3, 10% glycerol |
| Preparation: | Recombinant protein was captured through anti-DDK affinity column followed by conventional chromatography steps. |
| Note: | For testing in cell culture applications, please filter before use. Note that you may experience some loss of protein during the filtration process. |
| Storage: | Store at -80°C. |
| Stability: | Stable for 12 months from the date of receipt of the product under proper storage and handling conditions. Avoid repeated freeze-thaw cycles. |
| RefSeq: | NP_078980 |
| Locus ID: | 55614 |
| UniProt ID: | Q96L93 , A0A140VK74 |
| RefSeq Size: | 5268 |
| Cytogenetics: | 20p12.1 |
| RefSeq ORF: | 3951 |
| Synonyms: | C20orf23; KISC20ORF; SNX23 |
| Summary: | The protein encoded by this gene is a kinesin-like protein that may be involved in intracellular trafficking. Three transcript variants encoding different isoforms have been found for this gene. [provided by RefSeq, Dec 2010] |
| Protein Families: | Druggable Genome |

Product images:



Coomassie blue staining of purified KIF16B protein (Cat# TP318038). The protein was produced from HEK293T cells transfected with KIF16B cDNA clone (Cat# [RC218038]) using MegaTran 2.0 (Cat# [TT210002]).