

## Product datasheet for **TP318037M**

### ODAPH (NM\_178497) Human Recombinant Protein

#### Product data:

|                                       |  |
|---------------------------------------|--|
| Product Type:                         | Recombinant Proteins   |
| Description:                          | Recombinant protein of human chromosome 4 open reading frame 26 (C4orf26), 100 µg  |
| Species:                              | Human  |
| Expression Host:                      | HEK293T  |
| Expression cDNA Clone or AA Sequence: | >RC218037 protein sequence<br><b>Red</b> =Cloning site <b>Green</b> =Tags(s)   |
|                                       | MARRHCFSYWLLVCWLWVVAEGQEEVFTPPGDSQNNADATDCQIFLTTPPPAPRSPVTRAQPITKTPRC<br>PFHFFRRPRIHFRFPNRPVPSRCNHRFPFQPFYWPHRYLTYRYFPRRRLQRGSSEES                   |
|                                       | <b>TRTRPLEQKLISEEDLAANDILDYKDDDDKV</b>   |
| Tag:                                  | C-Myc/DDK  |
| Predicted MW:                         | 15.4 kDa   |
| Concentration:                        | >0.05 µg/µL as determined by microplate BCA method   |
| Purity:                               | > 80% as determined by SDS-PAGE and Coomassie blue staining  |
| Buffer:                               | 25 mM Tris-HCl, 100 mM glycine, pH 7.3, 10% glycerol   |
| Preparation:                          | Recombinant protein was captured through anti-DDK affinity column followed by conventional chromatography steps.                                     |
| Note:                                 | For testing in cell culture applications, please filter before use. Note that you may experience some loss of protein during the filtration process. |
| Storage:                              | Store at -80°C.  |
| Stability:                            | Stable for 12 months from the date of receipt of the product under proper storage and handling conditions. Avoid repeated freeze-thaw cycles.        |
| RefSeq:                               | <a href="#">NP_848592</a>  |
| Locus ID:                             | 152816   |
| UniProt ID:                           | <a href="#">Q17RF5</a>   |
| RefSeq Size:                          | 1882   |
| Cytogenetics:                         | 4q21.1   |



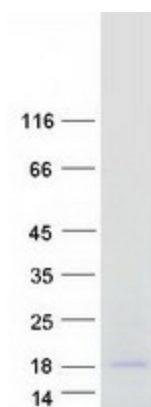
[View online »](#)

RefSeq ORF: 390

Synonyms: AI2A4; C4orf26

Summary: Dental enamel forms the outer cap of teeth and is the hardest substance found in vertebrates. This gene is thought to encode an extracellular matrix acidic phosphoprotein that has a function in enamel mineralization during amelogenesis. Mutations in this gene are associated with recessive hypomineralized amelogenesis imperfecta. [provided by RefSeq, Oct 2012]

### Product images:



Coomassie blue staining of purified ODAPH protein (Cat# [TP318037]). The protein was produced from HEK293T cells transfected with ODAPH cDNA clone (Cat# [RC218037]) using MegaTran 2.0 (Cat# [TT210002]).