

## Product datasheet for **TP317990M**

### SCFD1 (NM\_016106) Human Recombinant Protein

#### Product data:

Product Type:	Recombinant Proteins
Description:	Recombinant protein of human sec1 family domain containing 1 (SCFD1), transcript variant 1, 100 µg
Species:	Human
Expression Host:	HEK293T
Expression cDNA Clone or AA Sequence:	>RC217990 representing NM_016106 Red=Cloning site Green=Tags(s)

MAAAAAATAAAAASIRERQTVALKRMLNFNVPHIKNSTGEPVWVKVLIYDRFGQDIISPLLSVKELRDMGI  
TLHLLLHSDRDPIDVPAVYFVMPTEENIDRMCQDLRNQLYESYYLNFISAISSKLEDIANAALAASAV  
TQVAKVFDQYLNFIITLED DMFVLCNQNKELVSYRAINRPDITDTEMETVMDTIVDSLFCFFVTLGAVPII  
RCSRGTAAEMVAVKLDKRLRENLRDARNSLFTGDTLGAGQFSFQRPLLVLVDRNIDLATPLHHTWTYQAL  
VHDVLD FHLNRVNLEESSGVENSPAGARPKRKNKSYDLTPVDKFWQKHKGSPFPEVAESVQQELESYRA  
QEDEVKRLKSIMGLEGEDEGAISMLSDNTAKLTSVSSLPELLEKKRLIDLHTNVATAVLEHIKARKLDV  
YFEYEEKIMSKTTLDKSLLDIISDPDAGTPEDKMRLFLIYYISTQQAPSEADLEQYKKALTDAGCNLNPL  
QYIKQWKAFTKMASAPASYGSTTTKPMGLLSRVMTGVSQFVMEGVKNLVLKQQNLPVTRILDNLMEMKSN  
PETDDYRYFDPKMLRGNDSVPRNKNPFQEAIVFWGGGNYIEYQNLVDYIKGKQGKHILYGCSELFNAT  
QFIKQLSQLGQK

TRTRPLEQKLISEEDLAANDILDYKDDDDKV

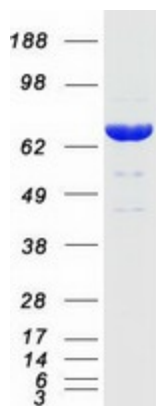
Tag:	C-Myc/DDK
Predicted MW:	72.2 kDa
Concentration:	>0.05 µg/µL as determined by microplate BCA method
Purity:	> 80% as determined by SDS-PAGE and Coomassie blue staining
Buffer:	25 mM Tris-HCl, 100 mM glycine, pH 7.3, 10% glycerol
Preparation:	Recombinant protein was captured through anti-DDK affinity column followed by conventional chromatography steps.
Note:	For testing in cell culture applications, please filter before use. Note that you may experience some loss of protein during the filtration process.
Storage:	Store at -80°C.



[View online »](#)

<b>Stability:</b>	Stable for 12 months from the date of receipt of the product under proper storage and handling conditions. Avoid repeated freeze-thaw cycles.
<b>RefSeq:</b>	<a href="#">NP_057190</a>
<b>Locus ID:</b>	23256
<b>UniProt ID:</b>	<a href="#">Q8WVM8</a>
<b>RefSeq Size:</b>	2172
<b>Cytogenetics:</b>	14q12
<b>RefSeq ORF:</b>	1926
<b>Synonyms:</b>	C14orf163; RA410; SLY1; SLY1P; STXBP1L2
<b>Summary:</b>	Plays a role in SNARE-pin assembly and Golgi-to-ER retrograde transport via its interaction with COG4. Involved in vesicular transport between the endoplasmic reticulum and the Golgi (By similarity).[UniProtKB/Swiss-Prot Function]

### Product images:



Coomassie blue staining of purified SCFD1 protein (Cat# [TP317990]). The protein was produced from HEK293T cells transfected with SCFD1 cDNA clone (Cat# [RC217990]) using MegaTran 2.0 (Cat# [TT210002]).