

Product datasheet for TP317977M

BAF53A (ACTL6A) (NM_004301) Human Recombinant Protein

Product data:

Product Type:	Recombinant Proteins
Description:	Recombinant protein of human actin-like 6A (ACTL6A), transcript variant 1, 100 µg
Species:	Human
Expression Host:	HEK293T
Expression cDNA Clone or AA Sequence:	>RC217977 representing NM_004301 Red =Cloning site Green =Tags(s)

MVVERDDGSTLMEIDGDKGKQGGPTYIIDTNALRVPRENMEAISPLKNGMVEDWDSFQAILDHTYKMHVK
SEASLHPVLMSEAPWNTRAKREKLTMLMFEHYNIPAFFLCKTAVLTAFAANGRSTGLILDGATHHTAIPV
HDGYVLQQGIVKSPLAGDFITMQCRELFQEMNIELVPPYMIATKEAVREGSPANWKRKEKLPQVTRSWHN
YMCNCVIQDFQASVLQVSDSTYDEQVAAQMPTVHYEFPNGYNCDFGAERLKIPEGLFDPNSNVKGLSGNTM
LGVSHVVTTSVGMCDIDIRPGLYGSVIVAGGNTLIQSFTDRLNRELSQKTPPSMRLKLIANNTTVERRFS
SWIGGSILASLGTFFQQMWISKQEYEEGGKQCVERKCP

TRTRPLEQKLISEEDLAANDILDYKDDDDKV

Tag:	C-Myc/DDK
Predicted MW:	47.3 kDa
Concentration:	>0.05 µg/µL as determined by microplate BCA method
Purity:	> 80% as determined by SDS-PAGE and Coomassie blue staining
Buffer:	25 mM Tris-HCl, 100 mM glycine, pH 7.3, 10% glycerol
Preparation:	Recombinant protein was captured through anti-DDK affinity column followed by conventional chromatography steps.
Note:	For testing in cell culture applications, please filter before use. Note that you may experience some loss of protein during the filtration process.
Storage:	Store at -80°C.
Stability:	Stable for 12 months from the date of receipt of the product under proper storage and handling conditions. Avoid repeated freeze-thaw cycles.
RefSeq:	<u>NP_004292</u>
Locus ID:	86



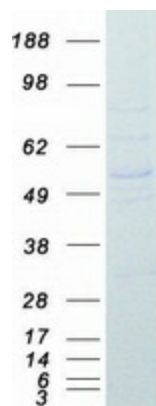
[View online »](#)

UniProt ID: [O96019](#)
RefSeq Size: 1879
Cytogenetics: 3q26.33
RefSeq ORF: 1161
Synonyms: ACTL6; Arp4; ARPN-BETA; BAF53A; INO80K

Summary: This gene encodes a family member of actin-related proteins (ARPs), which share significant amino acid sequence identity to conventional actins. Both actins and ARPs have an actin fold, which is an ATP-binding cleft, as a common feature. The ARPs are involved in diverse cellular processes, including vesicular transport, spindle orientation, nuclear migration and chromatin remodeling. This gene encodes a 53 kDa subunit protein of the BAF (BRG1/brm-associated factor) complex in mammals, which is functionally related to SWI/SNF complex in *S. cerevisiae* and *Drosophila*; the latter is thought to facilitate transcriptional activation of specific genes by antagonizing chromatin-mediated transcriptional repression. Together with beta-actin, it is required for maximal ATPase activity of BRG1, and for the association of the BAF complex with chromatin/matrix. Three transcript variants that encode two different protein isoforms have been described. [provided by RefSeq, Jul 2008]

Protein Families: Druggable Genome, Transcription Factors

Product images:



Coomassie blue staining of purified ACTL6A protein (Cat# [TP317977]). The protein was produced from HEK293T cells transfected with ACTL6A cDNA clone (Cat# [RC217977]) using MegaTran 2.0 (Cat# [TT210002]).