

Product datasheet for **TP317977**

BAF53A (ACTL6A) (NM_004301) Human Recombinant Protein

Product data:

Product Type: Recombinant Proteins

Description: Recombinant protein of human actin-like 6A (ACTL6A), transcript variant 1, 20 µg

Species: Human

Expression Host: HEK293T

Expression cDNA Clone or AA Sequence: >RC217977 representing NM_004301
Red=Cloning site **Green**=Tags(s)

MVVERDDGSTLMEIDGDKGKQGGPTYIDTNALRVPRENMEAISPLKNGMVEDWDSFQAILDHTYKMH
VK
SEASLHPVLMSEAPWNTRAKREKLTLMFEHYNIPAFFLCKTAVLTAfangRSTGLILDGATHHTAIPV
HDGYVLQQGIVKSPLAGDFITMQCRELFQEMNIELVPPYMIATKEAVREGSPANWKRKEKLPQVTRSWH
N
YMCNCVIQDFQASVLQVSDSTYDEQVAAQMPTVHYEFPNGYNCDFGAERLKIPEGLFDPSNVKGLSGNT
M
LGVSHVTTSVGMCIDIRPGLYGSVIVAGGNTLIQSFTDRLNRELSQKTPPSMRLKLIANNTTVERRF
SWIGGSILASLGTFFQQMWISKQEYEEGGKQCVERKCP

TRTRPLEQKLISEEDLAANDILDYKDDDDKV

Tag: C-Myc/DDK

Predicted MW: 47.3 kDa

Concentration: >0.05 µg/µL as determined by microplate BCA method

Purity: > 80% as determined by SDS-PAGE and Coomassie blue staining

Buffer: 25 mM Tris-HCl, 100 mM glycine, pH 7.3, 10% glycerol

Preparation: Recombinant protein was captured through anti-DDK affinity column followed by conventional chromatography steps.

Note: For testing in cell culture applications, please filter before use. Note that you may experience some loss of protein during the filtration process.

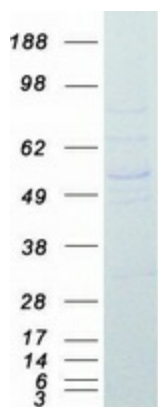
Storage: Store at -80°C.



[View online »](#)

Stability:	Stable for 12 months from the date of receipt of the product under proper storage and handling conditions. Avoid repeated freeze-thaw cycles.
RefSeq:	NP_004292
Locus ID:	86
UniProt ID:	O96019
RefSeq Size:	1879
Cytogenetics:	3q26.33
RefSeq ORF:	1161
Synonyms:	ACTL6; Arp4; ARPN-BETA; BAF53A; INO80K
Summary:	This gene encodes a family member of actin-related proteins (ARPs), which share significant amino acid sequence identity to conventional actins. Both actins and ARPs have an actin fold, which is an ATP-binding cleft, as a common feature. The ARPs are involved in diverse cellular processes, including vesicular transport, spindle orientation, nuclear migration and chromatin remodeling. This gene encodes a 53 kDa subunit protein of the BAF (BRG1/brm-associated factor) complex in mammals, which is functionally related to SWI/SNF complex in <i>S. cerevisiae</i> and <i>Drosophila</i> ; the latter is thought to facilitate transcriptional activation of specific genes by antagonizing chromatin-mediated transcriptional repression. Together with beta-actin, it is required for maximal ATPase activity of BRG1, and for the association of the BAF complex with chromatin/matrix. Three transcript variants that encode two different protein isoforms have been described. [provided by RefSeq, Jul 2008]
Protein Families:	Druggable Genome, Transcription Factors

Product images:



Coomassie blue staining of purified ACTL6A protein (Cat# TP317977). The protein was produced from HEK293T cells transfected with ACTL6A cDNA clone (Cat# [RC217977]) using MegaTran 2.0 (Cat# [TT210002]).